

Central Monitoring by Center V2

With Center V2, central monitoring station (CMS) can be deployed immediately because it brings multiple GV systems together into an integrated interface, allowing the operator to manage several systems from one point of control. The basic function of Center V2 is to view live video, and receive video evidence (in an attachment format) when any alerts are sent to the Center V2. This helps the remote-end operator easily determine the nature of the alarm. A subscriber ID must be given to your GV system in order to use the features provided by Center V2.

Installing Center V2

There are two versions of Center V2. The standard version can serve up to 5 subscribers and 80 channels at a time, while the professional one can serve up to 50 subscribers and 800 channels. Before the installation, make sure your computer meets the following minimum requirements.

The standard version:

OS	Windows 2000, Windows XP, Server 2003
CPU	Pentium 4, 2.0G
Memory	256 MB RAM
Hard Disk	60 GB
VGA	NVIDIA GeForce II 32MB, 1024 x 768 screen resolution
Network	TCP/IP

The Pro. version:

OS	Windows 2000, Windows XP, Server 2003
CPU	Pentium 4, 2.6 GHz, 800MHz FSB
Memory	2 x 256MB dual DDR400 SDRAM
Hard Disk	250GB
VGA	NVIDIA GeForce4 MX440 64MB, 1024 x 768 resolution
Network	TCP/IP

Note: Depending on the version purchased, your Center V2 may or may not come with a USB dongle. If your Center V2 is provided with a USB dongle, make sure it is tightly connected to the PC.

To install Center V2, follow these steps:

1. Insert the installation CD to your CMS's (Central Monitoring Station) PC.
2. Select the item of Install Version 7.0 system from the pop-up window.
3. Click CenterV2, and follow the on-screen instructions. Refer to Figure 1-15 on page 15.

The Center V2 Window

After the installation, start the application from the Windows Start menu. The following monitoring window will appear. No images will appear until you add and connect to subscribers.

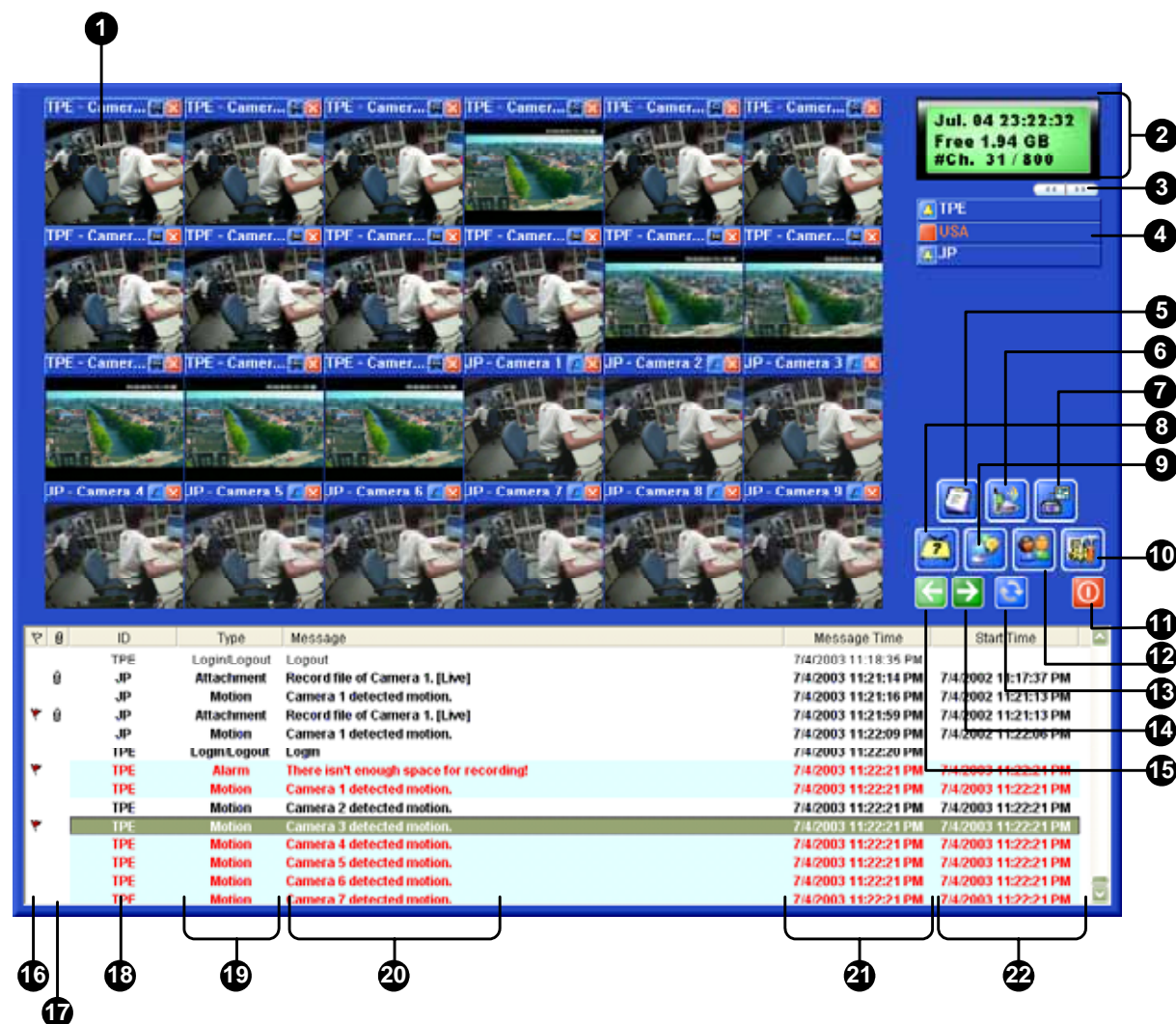


Figure 9-1 The Center V2 window

The controls in the Center V2 window:

No.	Name	Description
1	Monitoring Window	Displays live videos.
2	Status Panel	Shows the date, time, remaining disk space, and the total online channels versus available channels.
3	Subscriber Scroll	Scrolls to view more connection status when more than 12 subscribers are connected.
4	Subscriber Status	<p>Displays subscribers' ID names and online status.</p> <p>Blue Icon: Indicates the subscriber is online.</p> <p>Red Icon: Indicates the subscriber is off-line.</p> <p>Alarm Icon: Indicates either motion has been detected or the I/O has been triggered at the subscriber's site.</p>
5	Event List	Offers options to view your events.
6	SMS	Provides the SMS service.
7	I/O Device	Configures and forces output devices at Center V2.
8	Screen Division	<p>In the 1024 x 768 resolution, you can select 6, 15, or 24 screen divisions for a single monitor; 9, 25, or 36 screen divisions for dual monitors.</p> <p>In the 1280 x 1024 resolution, you can select 6, 12, or 30 screen divisions for a single monitor; 9, 20, or 42 screen divisions for dual monitors. For resolution, see <i>Layout Settings</i> on page 193.</p>
9	Host Info	Displays the connection status of subscribers.
10	Preference Settings	Defines how Center V2 should work.
11	Exit Button	Exits Center V2.
12	Accounts	Adds, deletes or modifies subscriber accounts.
13	Refresh	Refreshes the connection status.
14	Page Select Down	Click to view the next page of camera views.
15	Page Select Up	Click to view the previous page of camera views.
16	Flag	Click this column to flag an event for later reference.
17	Clip	Indicates an event coming with an attachment. Double click the event to open the attached video file.
18	Subscriber ID	Displays a subscriber's ID.
19	Event Type	Displays the event type, including Alarm, Attachment, Connection, Login/Logout, Motion, System, and Trigger.
20	Message	Displays associated information for each event type.
21	Message Time	Indicates when Center V2 receives an event.
22	Event Start Time	Indicates when an event happens at the subscriber's site.

A list of Types and Messages will be displayed on Center V2:

Type	Message
Motion	Camera xx detected motion.
Trigger	Module xx triggered.
Connection	Camera xx video lost; Module xx I/O lost; Network abnormal; Fail to login to dispatch server; Dispatch server is shutdown; Video signal of xx has resumed; Module xx has returned to normal; Failed to login SMS server; Failed to send short message; SMS server is shutdown.
Alarm	Disk Full; Restarted Failed; Multicam Closed; There isn't enough space for recording; Multicam Surveillance System has been closed; An unexpected error occurred in Multicam Surveillance System. (Error Code: 1 or 2); There is an intruder; Object Missing; Unattended Object; Alert Message of POS.
Attachment	Record file of Camera xx.
System	Start/end service; IP change; Record failed; Status change of monitoring camera. On: xx Off: xx /(By Schedule); Stop/start all cameras monitoring; Start/stop I/O Monitoring. /(By Schedule); Schedule start; Schedule stop. All monitoring device are stop too.

Note: Error Code 1 indicates a codec error; Error Code 2 indicates that users can't write or record any data due to HD failure or user privilege.

Creating a Subscriber Account

Before starting Center V2, add one subscriber to the center at least. The free version of Center V2, included in the installation CD, only allows 5 subscriber accounts. To create an account, follow these steps:

1. Click the Accounts button. The Subscriber Information window appears.

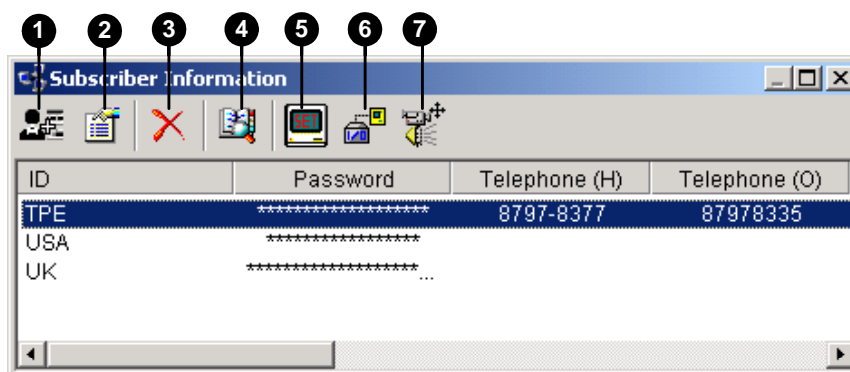


Figure 9-2 Subscriber Information

The buttons of the toolbar:

No.	Name	Description
1	Add A Subscriber	Click to add a subscriber.
2	View/Edit Subscriber Address Book	Highlight one subscriber and click the button to open Subscriber Address Book for viewing and editing.
3	Delete A Subscriber	Highlight one subscriber and click the button to delete a created subscriber.
4	Find A Subscriber	Click to search a subscriber account.
5	Subscriber Settings	Highlight one subscriber and click the button to configure the settings of video and alert formats.
6	I/O Status	Highlight one subscriber and click the button to view the status of I/O devices.
7	Camera/Audio Control	Highlight one subscriber and click the button to control cameras and audios.

- Click the Add A Subscriber button. The Subscriber Address Book dialog box appears.

Figure 9-3 Address Book of a subscriber

- Enter a login ID and password (required). Those will be the ID and password for the subscriber to log in to the Center V2. Relate to Figure 9-10.
- Enter the subscriber's contact information in the rest of fields (optional).
 - If you wish to send e-mail alerts to this subscriber, enter its e-mail address. For e-mail settings, refer to *E-Mail Alerts* on page 209.

- If you wish to send SMS alerts to this subscriber, enter its country code and mobile number.
For SMS server settings, refer to *SMS Alerts* on page 208.
- 5. Click the Save button to save the above settings.
- 6. You will be prompted to another dialog box, shown as follows:

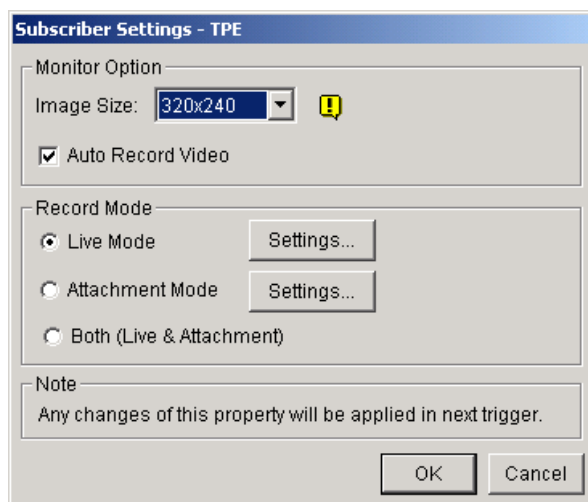


Figure 9-4 Subscriber Settings

7. The options in the dialog box are discussed below. You may accept the default settings here, and edit them later by clicking the Subscriber Settings button on the toolbar. When you click the OK button, the subscriber account then is created.

[Monitor Option]

- **Image Size:** Select to receive video size in 320x240, 640x240, or 640x480 from subscriber PC. Please note, in order to receive 640x480, the GV system at subscriber site must be configured to record 640x480 as well.
- **Auto Record Video:** Center V2 automatically record events base on Record Mode (see the following).

[Record Mode]

- **Live Mode:** Live Mode streams live video to Center V2. Make sure you have enough bandwidth to receive videos in live. Click the Settings right next to the Live Mode option; this brings up the Record Settings – Live Mode dialog box. Select the time from the drop-down list. This sets the maximum time of a video clip to be sent to Center V2. The more the set minutes, the bigger the file size, and therefore more time is required to send the file over Internet.
- **Attachment Mode:** A defined time of event will be recorded before sending to Center V2. The attachment will be sent out immediately once your subscriber is online connected to Center V2. The Attachment Mode also provides several options associated with the attachment. Click the Settings button right next to the Attachment Mode button. This brings up the Record Settings – Attachment Mode shown as follows:

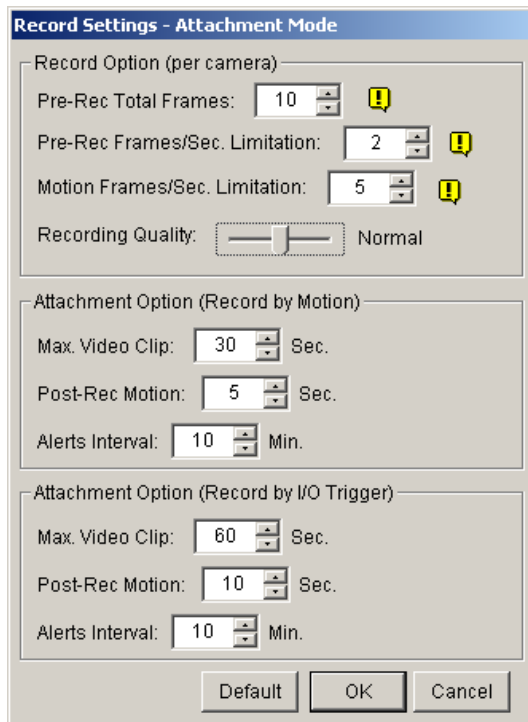


Figure 9-5 Recording Setting

[Record Options (per camera)]

- **Pre-Rec Total Frames:** Determines the total pre-recorded frames in a video attachment.
- **Pre-Rec Frames/sec Limitation:** Determines frame rate in the pre-recorded period.

Note: Dividing the Pre-Rec Total Frames by Pre-Rec Frames/Sec Limitation, you will get total time of the video attachment.

- **Motion Frames/sec Limitation:** Determines frame rate of the video to be sent as an attachment.
- **Recording Quality:** Use the slider bar to adjust the video quality in 3 levels.

[Attachment option (Record by Motion)] Defines the duration of each video attachment delivered by motion event.

- **Max video Clip:** Determines the duration of each video attachment.
- **Pos-Rec Motion:** Determines how many more seconds of video to be sent when motion stops.
- **Alerts interval:** Determines the interval time between each motion event.

[Attachment option (Record by I/O trigger)] Defines the length of time of an I/O triggered video attachment.

- **Both (Live & Attachment):** Sends both live and attachment file.

Configuring Center V2

Click the Preference Settings button in the main screen, and select System Configure to display the following Preference window. This window contains these major tabs: (1) General, (2) Layout, (3) Network, (4) Record and (5) Dispatch Server.

General Settings

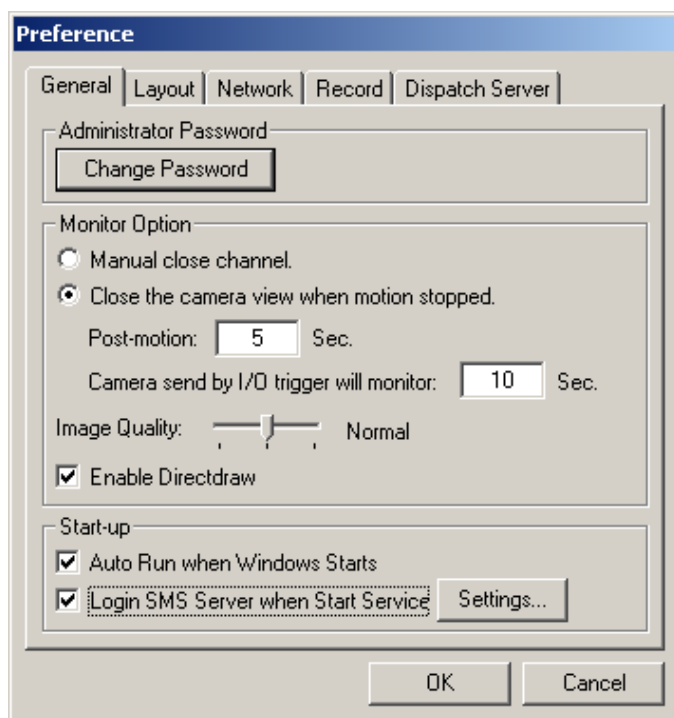


Figure 9-6 Preference- General Settings

[Administrator Password] Click the Change Password button to set up an ID and a password for the Center V2 administrator.

[Monitor Option]

- **Manual close channel:** Closes the triggered camera view manually.
- **Close the camera view when motion stopped:** Closes the triggered camera view automatically when motion stops.
Post Motion: Specify the time in seconds for how long the camera view remains on the monitoring window after a motion stops.
Camera send by I/O trigger will monitor: Specify the time in seconds for how long the camera view remains on the monitoring window when an I/O device is triggered.
- **Image Quality:** Adjust the video quality. Moving the slide bar to the right side for the better quality and the bigger image size.
- **Enable Direcdraw:** Enable an enhanced image performance for live video.

[Start-up]

- **Auto Run when Windows Starts:** Automatically runs Center V2 when Windows starts.
- **Login SMS Server when Start Service:** Automatically logs in SMS Server when Center V2 starts. You will be prompted to enter the IP address, Port, ID and Password of the SMS server.

Layout Settings

This function transfers the Event List window to a separate computer while the monitoring windows are displayed in the current computer. For the application, your VGA card must support Twin View (discussed in Chapter 13), and your Windows desktop must be properly set up for the display across two computer monitors.

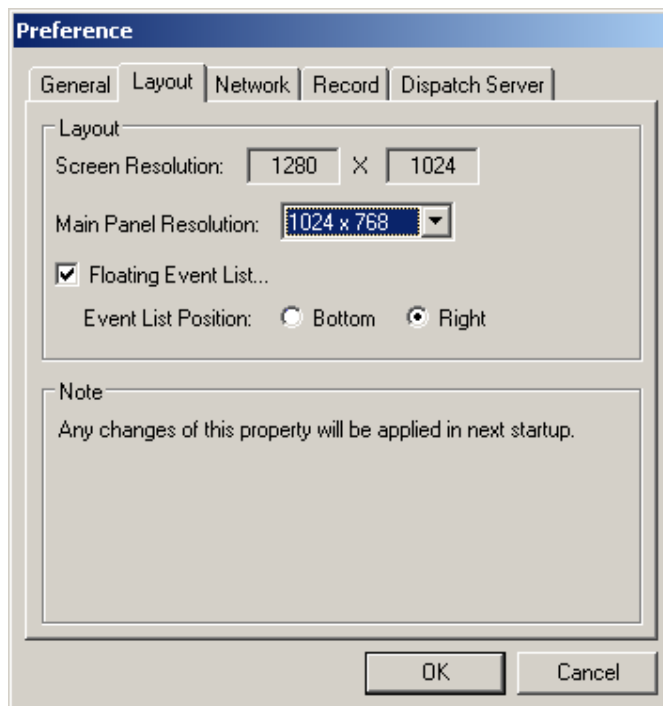


Figure 9-7 Preference-Layout

- **Screen Resolution:** Detects the current screen resolution on your PC.
- **Main Panel Resolution:** Sets the Center V2 panel resolution to 1024 x768 or 1280 x1024. This function is only available when your PC screen resolution is higher than 1280 x 1024.
- **Floating Event List:** Moves the Event List window to a separate monitor at the bottom or right hand.

Network Settings

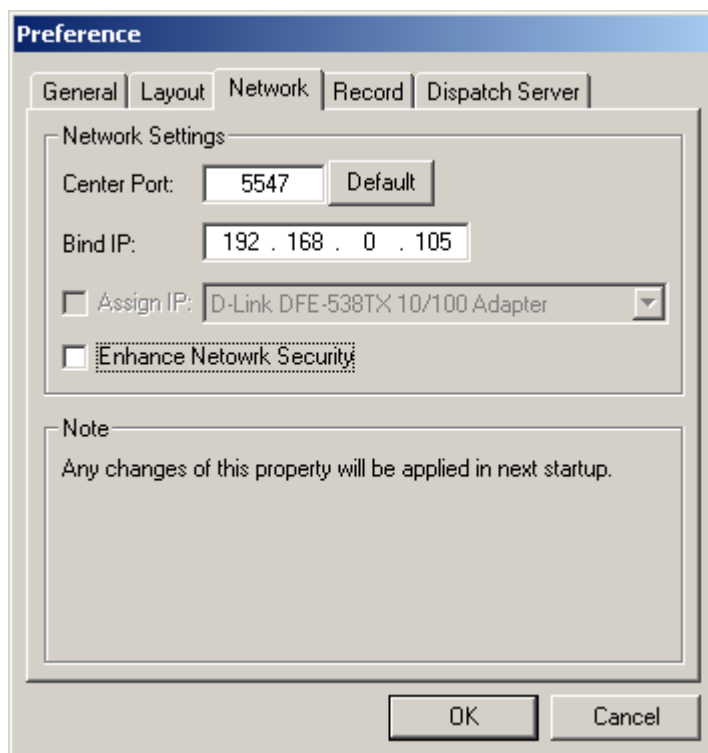


Figure 9-8 Preference- Network Settings

- **Center Port:** Indicates the network port used by the Center V2.
- **Bind IP:** Shows the current IP address of the Center V2. If the computer of the Center V2 is installed more than one network card, the Assign IP option will be available. Selecting a desired network card can automatically bring up its Bind IP.
- **Enhance Network Security:** Applies enhanced security for Internet. Please notice when the feature is enabled, all subscribers using earlier version than version 7.0 cannot access the Center V2 any more.

Record Settings

The feature allows you to assign a path to store video files. Click the Add New Path button to assign a path; click the [X] button to delete a path. If the Recycle item is checked, the system will delete old files when storage space falls short of 800MB; if not checked, Center V2 will stop recording when storage space falls short of 800MB.

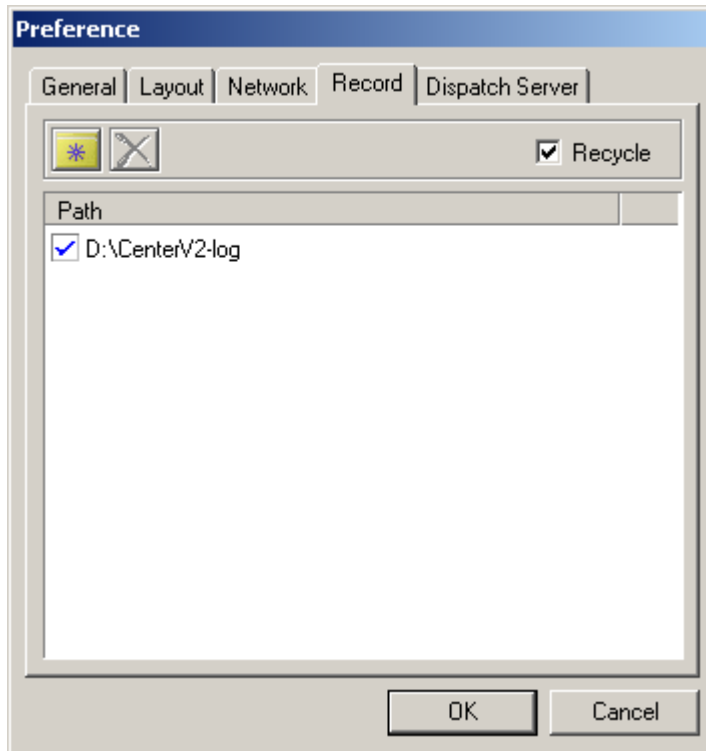


Figure 9-9 *Preference-Record*

Note: Every time when the Recycle function is activated, the files of 400MB will be deleted.

Dispatch Server Settings

This function is not available for the Center V2 included in the installation CD. It is only available with additional purchase of this feature. See *Dispatch Server* in Chapter 10.

Connecting to Center V2

To configure the GV-system in order to access the Center V2 remotely through a network connection, follow these steps:

1. Click the Network button, and select Connect to Center V2 (V). This dialog box appears.

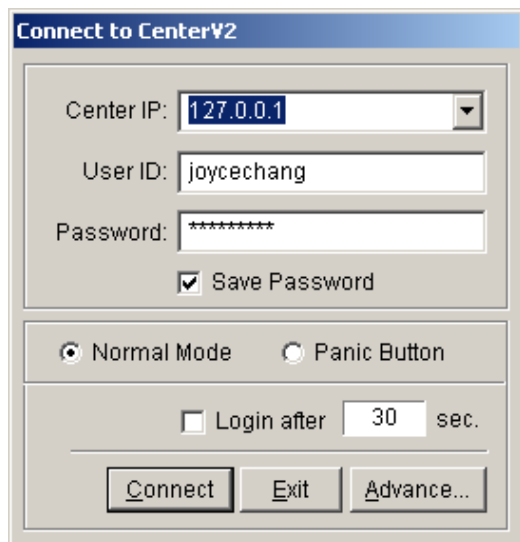


Figure 9-10 Connect to Center V2

2. Enter the IP address of the Center V2, the user ID and password created in Center V2. Relate to Figure 9-2.
3. Click the Connect button. When the connection is established, Center V2 will start receiving videos or attachments from the subscriber.

Normal Mode Setup

To configure the subscriber's status, select Normal Mode in the Connect to Center V2 dialog box (Figure 9-10), and then click the Advance button for the setup. The setup window includes two major tabs: General Setting and Monitor Control.

[General Settings]

The general settings let you configure the general communication mode between the subscriber and Center V2.

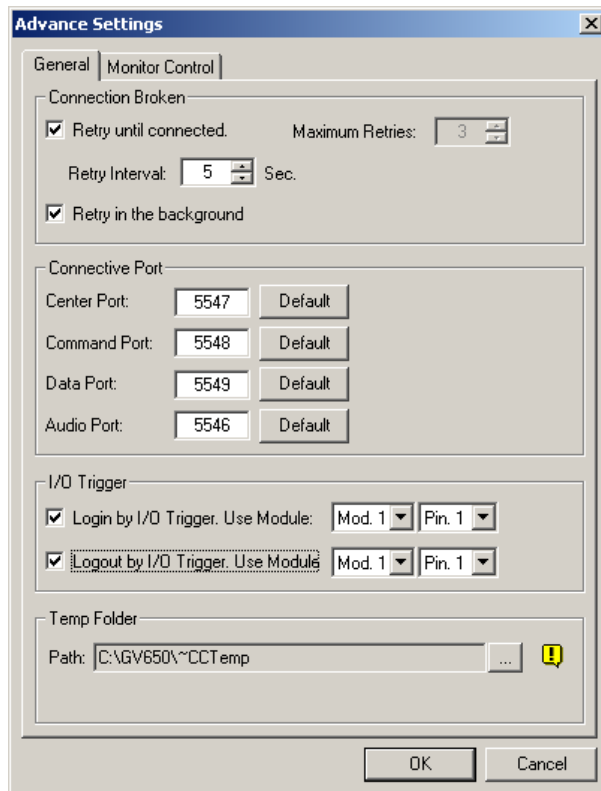


Figure 9-11 Advance Settings

[Connection Broken]

- **Retry until connected:** Keeps GV-system on trying until connected to Center V2.
- **Retry interval:** Determines the time interval among each retry.
- **Maximum retries:** Sets the number of retries if connection is not immediately available.
- **Retry in the background:** Hides the retries in the background.

[Connective Port] Display ports used for communication. It is recommended keep the default settings, unless otherwise necessary. This Center Port number must match the Center Port assigned in Center V2, as shown in Figure 9-8.

[I/O Trigger] Subscribers may log in Center V2 on I/O activation. For example, your GV system may log in Center V2 when a card reader is reached to the gate.

- **Login by I/O trigger:** Logs in Center V2 automatically when the selected relay output is triggered.
- **Logout by I/O trigger:** Logs out from Center V2 when the selected relay output is triggered.

[Temp Folder] Attachments are temporarily stored in this folder while waiting to be sent to Center V2. In case the connection is broken, attachments meant to send to Center V2 could be found here. Once connection is back to normal, events saved in the Temp Folder will be sent out immediately.

[Monitor Control]

The settings define the conditions to send live video and alarm signals to Center V2.

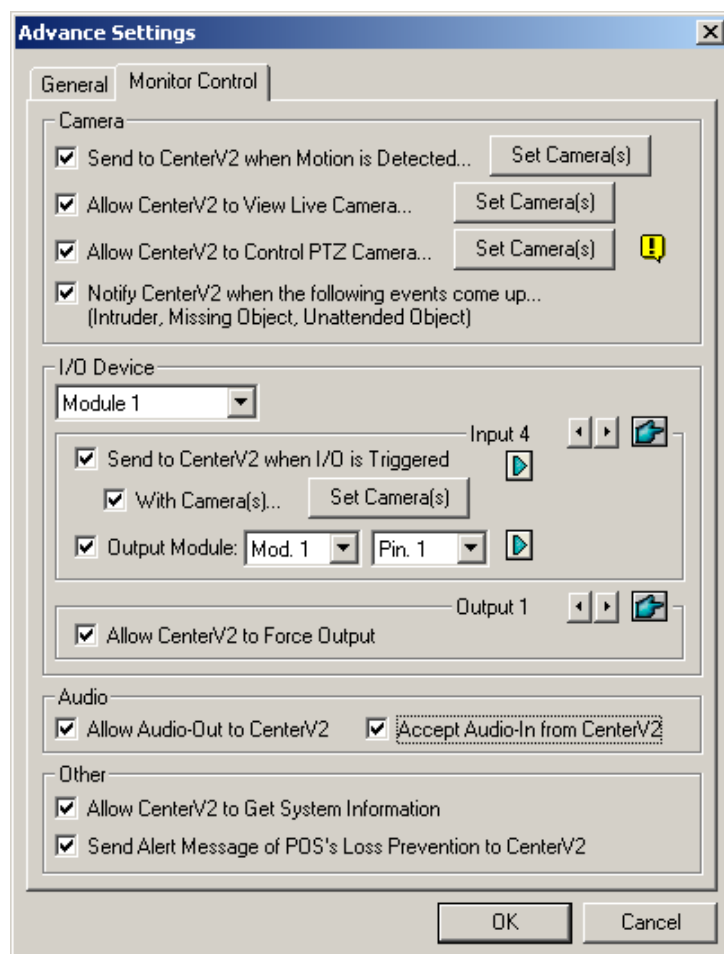


Figure 9-12 Advanced Settings- General

[Camera]

- **Send to Center V2 when Motion is Detected:** Sends the video to Center V2 when motion is detected. Click the Set Camera(s) button to assign cameras for the application.
- **Allow Center V2 to View Live Camera:** Allows Center V2 to posse the privilege to view your cameras at any time. Click the Set Camera(s) button to assign cameras for the application.
- **Allow Center V2 to Control PTZ Camera:** Allows Center V2 to posse the privilege to control your PTZ camera. Mapping PTZ Camera on page 43 must be properly set up first.
- **Notify Center V2 when the following events come up:** Notifies Center V2 when any of these alert events occur: Intruder, Missing Object and Unattended Object.

[I/O Device] Sends the related video to Center V2 when the assigned I/O device is triggered. Use the Module drop-down list to select one module; use the arrow buttons to select an input device.

- **Send to Center V2 when I/O is Triggered:** Notifies Center V2 on I/O activation.
Right Arrow button: Click to set the delay time to notify Center V2 of I/O trigger.
- **With Camera(s):** Sends the video to Center V2 when the selected I/O device is triggered.
Click the Set Camera(s) button to assign cameras for the application.
- **Output Module:** Enables an assigned output module and pin number on I/O activation.
Right Arrow button: Click to set the delay time to trigger the assigned output module.

Note: The Right Arrow button settings in **Send to Center V2 when I/O is Triggered** and **Output Module** allow you time to deactivate I/O devices and output modules. To deactivate prior I/O settings, you may exit the connection to Center V2 or use the **Logout by I/O Trigger** function in Figure 9-11.

[Audio] Applying any of these options here may generate privacy issues. Think before you make any selection.

- **Allow Audio-Out to CenterV2:** Allows Center V2 to listen to the audio from the surveillance site.
- **Accept Audio-In from CenterV2:** Allows CenterV2 to use the talk-back feature when emergency occurs.

[Other]

- **Allow Center V2 to Get System Information:** Allows Center V2 to get system information on your GV system.
- **Send Alert Message of POS's Loss Prevention to Center V2:** Notifies Center V2 about the events of POS Loss Prevention.

Panic Button Setup

You may set up a panic alarm button at your GV-system. In case of emergency, pressing the button immediately to send the associated video to Center V2.

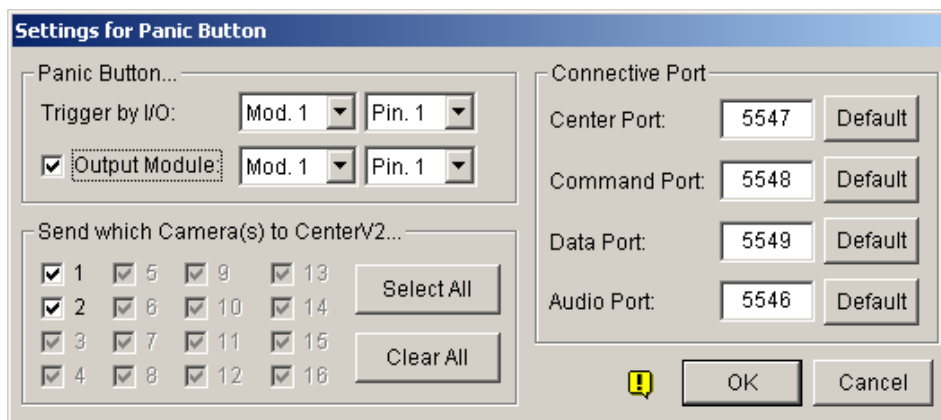


Figure 9-13 Settings for Panic Button

[Panic Button] Assigns an installed input device to be the panic alarm button

- **Trigger by I/O:** Assigns an input module and a pin number.
- **Output Module:** Enables an assigned output module and pin number as soon as the panic button is pressed.

[Send which Camera(s) to Center V2] Select which camera video should be sent to Center V2 when the panic alarm button is pressed or triggered.

[Connective Port] The communication ports used by Center V2. It is recommended to keep all defaults, unless otherwise necessary.

Incoming Events to Center V2

The Event Log Browser allows you to locate a desired event coming from subscribers. Click the Event List button and select View Event Log to display the following window.

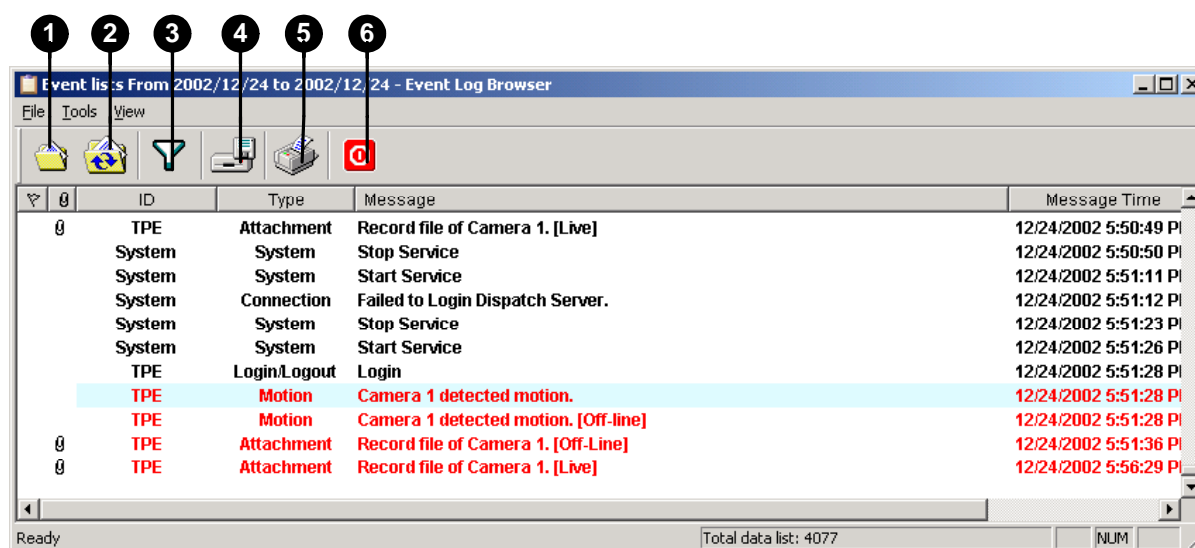


Figure 9-14 Event Log Browser

The buttons on the toolbar:

No.	Name	Description
1	Open	Click to open an event log.
2	Reload	Click to refresh the event log list
3	Filter	Click to define the search criteria.
4	Backup	Click to save the current event list and video files.
5	Print	Click to print the current event list.
6	Exit	Click to exit the browser.

Opening the Event Log

Click the Open button to launch the following Open DataBase dialog box. Restrict a time period, select the type of log, and click OK for search. Events matching the search criteria will be loaded to the Event Log Browser window.

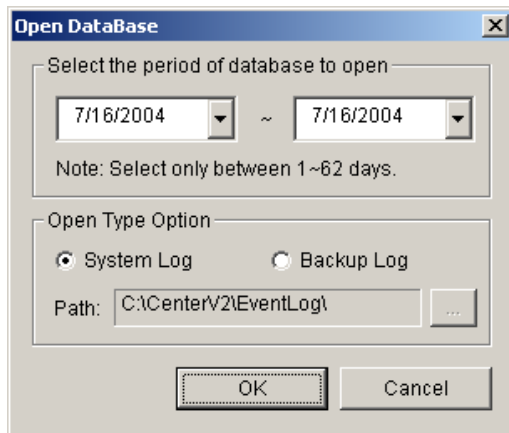


Figure 9-15 Open Database

Filtering the Event Log

Click the Filter button to bring up the following Eventlog -- Filter window. This option allows you to perform a search based on criteria.

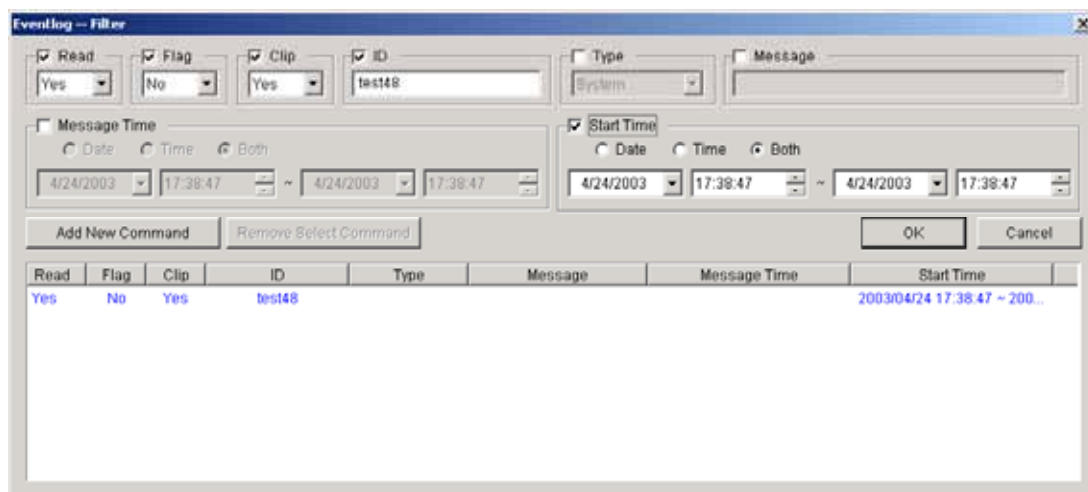


Figure 9-16 Eventlog-Filter

[Event Log Filters]

Read: Searches the events read in Center V2.

Flag: Searches the events flagged important.

Clip: Searches the events containing video attachments.

ID: Searches the events from a specific subscriber.

Type: Searches the events based on the nature of events.

Message: Searches the events by keywords.

Message Time: Searches the events by the arriving time or date to Center V2.

Start Time: Searches by the starting time of the events occurred at the subscriber site.

Applying Multiple Filters

This option allows you to define several filter commands for search. Click the Add New Command button to add a new filter command. When you click Ok, all events matching the defined commands will be listed on the Event Log Browser.

Removing Filters

Select the filter command you wish to remove from the filter list, and then click the Remove Selected Command button to remove it.

Event Log Settings

Click the Event List button, and select Event Log Setting to display the following dialog box:

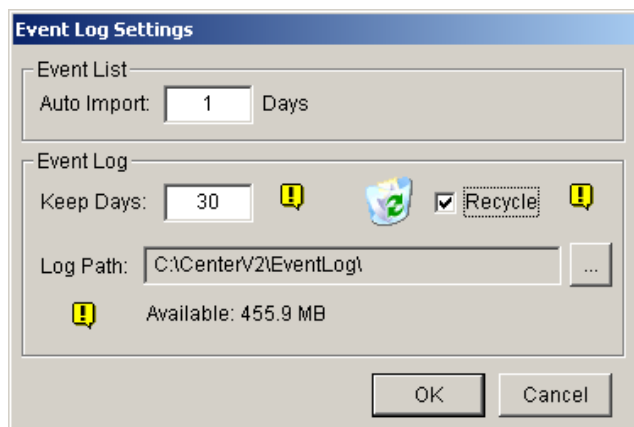


Figure 9-17 Event Log Settings

[Event List]

- **Auto Import:** Specify the number of days to be loaded when Event Log Browser is launched.

[Event Log]

- **Keep Days:** Enter the number of days to keep log files.
- **Recycle:** Delete the files of the oldest day when storage space is lower than 500MB.
- **Log Path:** Click the [...] tab to assign a storage path.

Monitoring and Managing Subscribers

This section describes how to monitor and manage subscribers in six parts. They are: (1) I/O Control, (2) Two-way Audio Control, (3) PTZ Control, (4) Camera Monitor, (5) Viewing Subscriber Information and (6) Controls in Subscriber Status.

I/O Control

The I/O Status window displays the current status of input devices and allows you to manually trigger outputs installed at the subscriber's GV-system. In the Subscriber Information window, Figure 9-2, select one subscriber from the window, and then click the I/O status button on the toolbar to bring up the following control window.

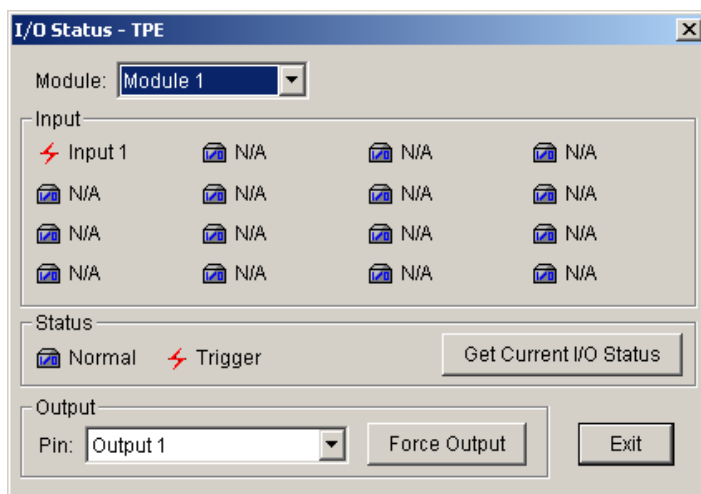


Figure 9-18 I/O Status

[Module] Select a module from the drop-down list.

[Input] This section displays the status of input devices of the selected module. The blue icon indicates the input is deactivated; the red lightening icon indicates the input is activated.

[Status] Click the Get Current I/O Status button to refresh the input status.

[Output] To trigger an output installed at the subscriber site, choose a desired output pin from the drop-down list and then click the Force Output button.

Two-Way Audio Control

This option allows two-way audio communication between CenterV2 and the subscriber. In the Subscriber Information window, Figure 9-2, select one subscriber from the window, and then click the Camera/Audio Control button on the toolbar to bring up the following window.

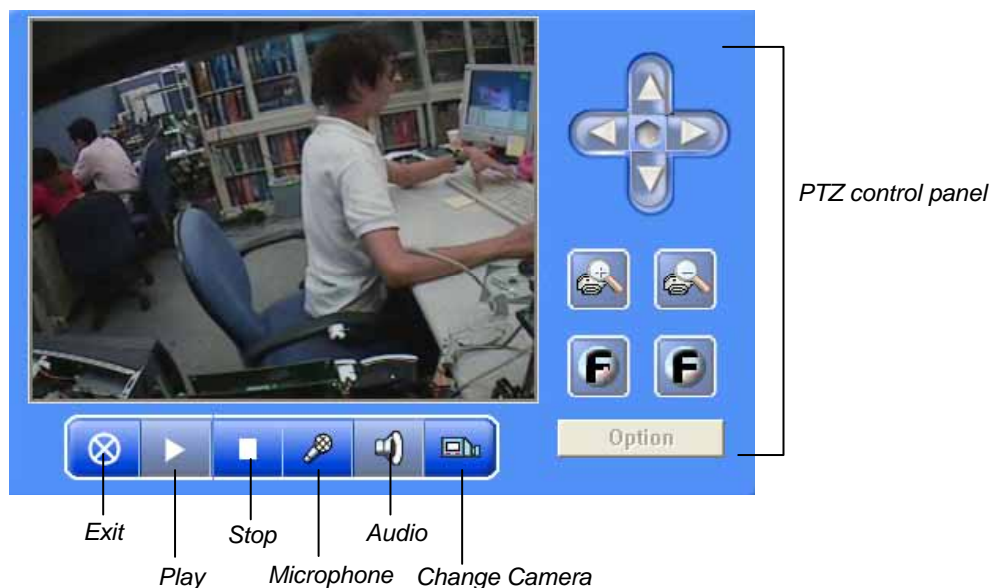


Figure 9-19 Camera/Audio Control

1. Click the Play button to activate the application.
2. Click the Change Camera button to select one desired camera channel.
3. Click the Audio button to listen to the audio attached with the channel. (The subscriber must grant the privilege. See Figure 9-12.)
4. Click the Microphone button to speak to the subscriber site.

PTZ Control

This option allows CenterV2 to control the subscriber's PTZ camera.

1. Open the Camera/Audio Control window. See Figure 9-19.
2. Click the Play button to activate the application.
3. Click the Change Camera button to select one PTZ camera. (The subscriber must grant the privilege. See Figure 9-12.)
5. Use the PTZ control panel to control the PTZ. Or click the Option button to direct the PTZ to a preset location or to change its speed in five levels.

Camera Monitor

Use the Camera Monitor window to define the following:

- Enable and disable live display (For this feature, first enable the Allow Center V2 to View Live Camera option in Figure 9-12.)
- Define the interval between incoming events triggered by motion detection

1. In the Subscriber Status section (No. 4 in Figure 9-1), right click one online subscriber and select Camera Monitor from the call-up menu.
2. The Camera Monitor window appears.

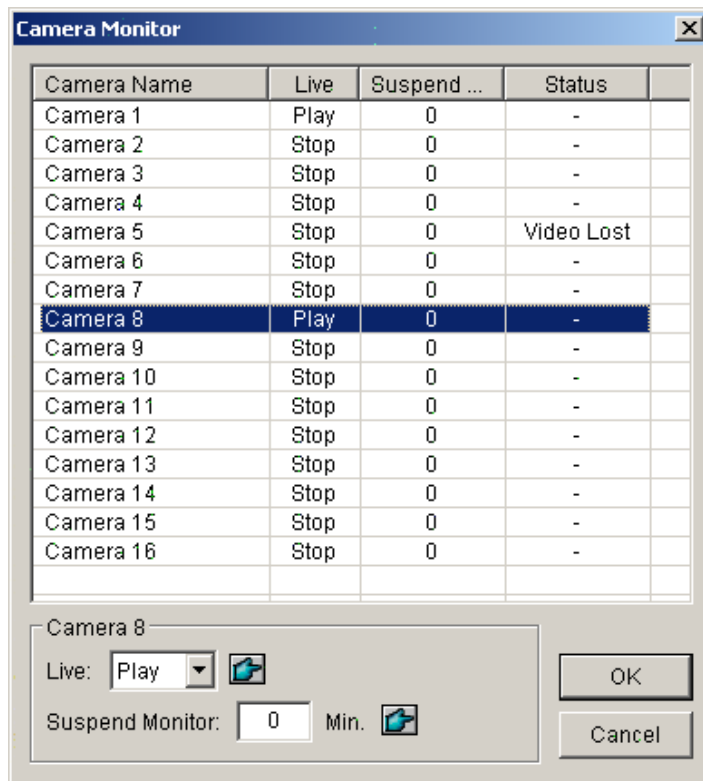


Figure 9-20 Camera Monitor

- **Live drop-down list:** Highlight one camera, and select Play (enable live display) or Stop (disable live camera).
- **Suspended Monitor:** Highlight one camera, and set the interval between incoming events triggered by motion detection. Alternatively, you can right click one live camera channel on the main screen and select Suspend for the same setting.
- **Status column:** Displays the status of video lost from cameras or disconnection.

3. Click OK to apply the settings.

If the camera is enabled for live display, you will see in the upper right corner of its monitoring window; otherwise, you will see .

Viewing Subscriber Information

To view the general information about your subscribers, click the Host Information button in the main screen. Choose a subscriber from the list, and click the View Information button to view its related information.

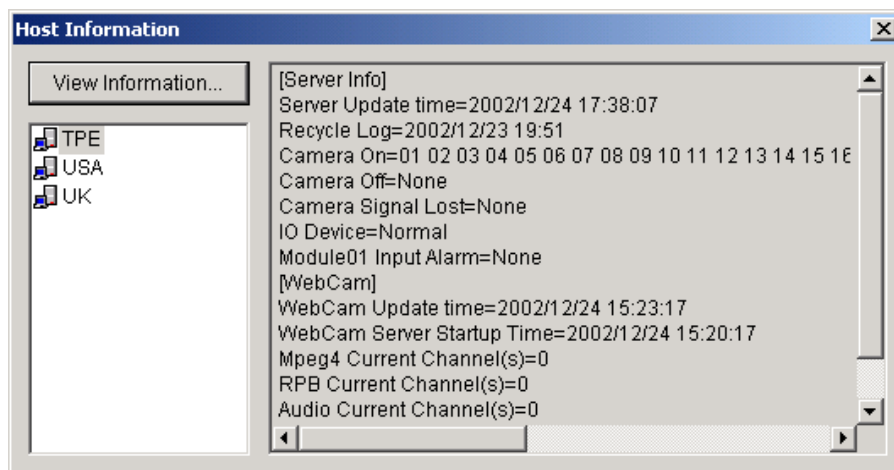


Figure 9-21 Host Information

Controls in Subscriber Status

The options in the Subscriber Status section (No. 4 in Figure 9-1) let you call up different control windows immediately. Right click one online subscriber to call up a menu. The options included are:

- Show Subscriber Information (see Figure 9-2)
- Show I/O Status (see Figure 9-18)
- Camera/Audio Control (see Figure 9-19)
- Send E-Mail (see *E-Mail Alerts* on page 209)
- Send Short Message (This is only available when the connection of Center V2 and the SMS server is established; see page 208).
- Camera Monitor (see Figure 9-20)

Alternatively, you can right click one displayed camera channel to call up a similar menu.

Output Alerts

The feature lets you configure output devices at the Center V2 site and force them manually when set alert conditions occur. For the kind of alert condition, refer to *[List Box], Notification Settings* on page 207.

Setting Output Devices

To configure output devices at the Center V2 site, click the I/O Device button in the main screen and then select I/O Device from the menu. Currently the application only supports GV-IO devices. For setup details, refer to *Setting Up I/O Devices* in Chapter 2 on page 29.

Forcing Output Devices

To force manually the output devices installed at the Center V2 site, click the I/O Device button in the main screen and then select Force Output to display the Force Output of Local I/O Device window.

Select a desired module and then click finger buttons to activate output devices at the Center V2 site.

Notification Settings

Center V2 can automatically activate the assigned computer alarm and output alarm to notify the operator while a SMS and e-mail message being sent out to subscribers, when alert conditions occur. For this application, click the Preference Settings button in the main screen and select Notification to display the following window.

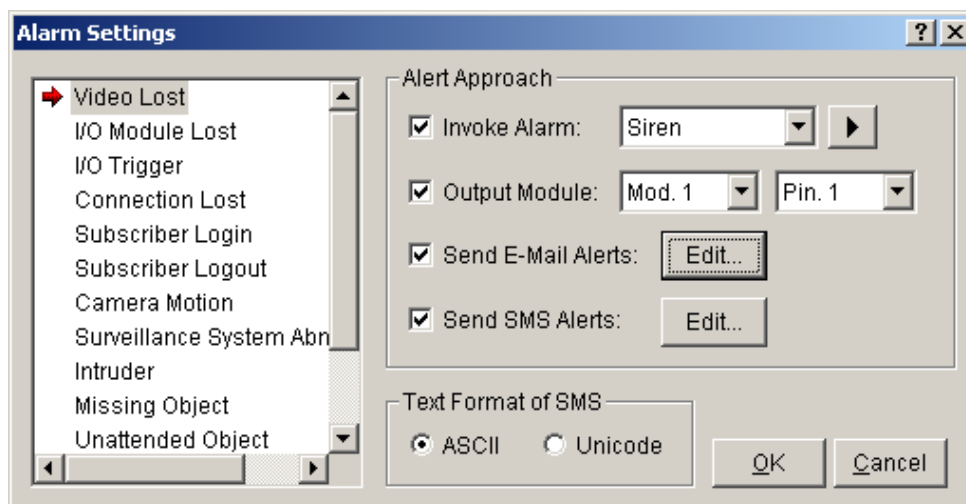


Figure 9-22 Alarm Settings

[List box] Select an alert condition for configuration. The alert conditions include: (1) Video Lost, (2) I/O Module Lost, (3) I/O Triggered, (4) Connection Lost, (5) Subscriber Login, (6) Subscriber Logout, (7) Camera Motion, (8) Surveillance System Abnormality, (9) Intruder, (10) Missing Object, (11) Unattended Object, (12) POS Loss Prevention and (13) Disk Full.

[Alert Approach]

- **Invoke Alarm:** Select a computer alarm from the drop-down list. Or, select User Define from the list to import one desired .wav sound. Click the arrow button next to the item to test the assigned alarm.
- **Output Module:** Select an installed output model and pin number to alert the Center V2 operator.
- **Send E-Mail Alerts:** Enables e-mail alerts to send e-mails to subscribers. Click the Edit button to edit a message. For e-mail settings, refer to *E-Mail Alerts* on page 209.

- **Send SMS Alerts:** Enables SMS alerts to send SMS to subscribers. Click the Edit button to edit a message. For SMS server settings, refer to *SMS Alerts* on page 208.

[Test Format of SMS] ASCII for English text, limited to 160 characters. Unicode for other languages, limited to 70 characters.

SMS Alerts


This feature lets you send SMS messages to subscribers when set alert conditions occur. For the kind of alert condition, refer to *List Box, Notification Settings* on page 207.

Connecting to the SMS Server

Click the SMS button in the main screen, and then select Connect to SMS Server to display the Connect to SMS Server window. Enter the IP address, Port No., ID and Password of the SMS server, and then click Connect for the connection. For more information on the SMS Server, refer to *Short Message Service* in Chapter 12.

Sending SMS

Once the connection of the SMS server and Center V2 is established, there are five ways to send SMS messages to subscribers. Refer to the main screen (Figure 9-1) for the following selections.

1. Click the SMS button and select Send Short Message. This sends SMS to an individual subscriber manually.
2. Right click one subscriber in the Subscriber Status field. Select Send Short Message from the call-up menu. This sends SMS to an individual subscriber manually.
3. Click one Event Type, except Attachment, to call up a message window. Click  the SMS icon in the window. This sends SMS to an individual subscriber manually.
4. Right click one online channel, and then select Send Short Message from the call-up menu. This sends SMS to an individual subscriber manually.
5. Click the Preference Settings button, and select Notification to display the Alarm Settings window. Check the Send SMS Alerts item. This sends SMS to subscribers automatically when set alert conditions occur. See *Notification Settings* on page 207.

E-Mail Alerts

You can send e-mails to subscribers when alert conditions occur. For the kind of alert condition, refer to *[List Box]*, *Notification Settings* on page 207.

Setting Mailbox

Before you can send e-mails to a separate e-mail account, you must define your mailbox correctly.

To set up the mailbox:

1. Click the Preference Settings button in the main screen, and then select E-Mail Setup. This displays the following dialog box.

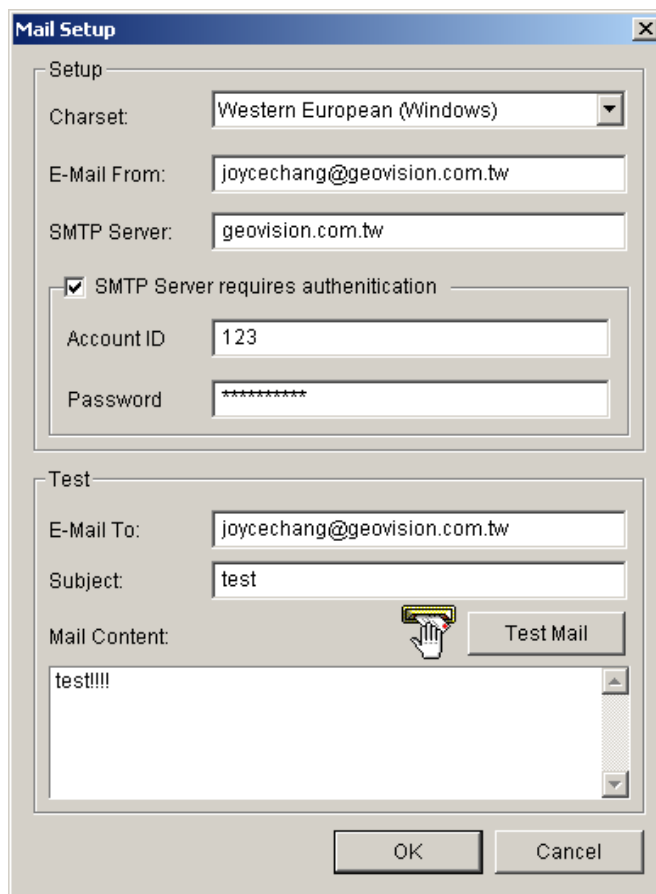
The image shows a 'Mail Setup' dialog box with two main sections: 'Setup' and 'Test'. The 'Setup' section contains fields for 'Charset' (set to 'Western European (Windows)'), 'E-Mail From' (set to 'joycechang@geovision.com.tw'), and 'SMTP Server' (set to 'geovision.com.tw'). There is a checkbox for 'SMTP Server requires authentication' which is checked. Below this are fields for 'Account ID' (set to '123') and 'Password' (masked with asterisks). The 'Test' section contains fields for 'E-Mail To' (set to 'joycechang@geovision.com.tw') and 'Subject' (set to 'test'). There is a 'Mail Content' text area with 'test!!!!' and a 'Test Mail' button. At the bottom are 'OK' and 'Cancel' buttons.

Figure 9-23 Mail Setup

2. In the Charset field, select the set of characters and symbols that the e-mail uses.
3. In the E-Mail From field, enter your e-mail address.
4. In the SMTP Server field, enter the outgoing server address.
5. If your e-mail service provider requires authentication for sending e-mails. Check SMTP Server requires authentication, and define the account ID and password of your SMTP.
6. Click OK.

To send a test e-mail:

After setting up your mailbox, you can use the Test section and send a message to your own e-mail account for testing.

1. Enter your own e-mail address in the E-Mail To field.
2. Enter a subject for the e-mail
3. Type the desired message in the Mail Content field.
4. Click the Test Mail button.

Sending E-Mail

There are three ways to send e-mail alerts. Refer to the main screen (Figure 9-1) for the following selections.

1. Right click one subscriber in the Subscriber Status field, and then select Send E-Mail from the call-up menu. This sends the e-mail to an individual subscriber manually.
2. Right click one online channel, and then select Send E-Mail from the call-up menu. This sends the e-mail to an individual subscriber manually.
3. Click the Preference Settings button, and select Notification to display the Alarm Settings window. Check the Send E-Mail item. This sends e-mails to subscribers automatically when set alert conditions occur. See *Notification Settings* on page 183.