



>>>2MP, MOTORIZED LENS,
LICENSE PLATE CAPTURE (LPC),
IP BULLET CAMERA

IP LPC CAMERA
IPLPC2RI



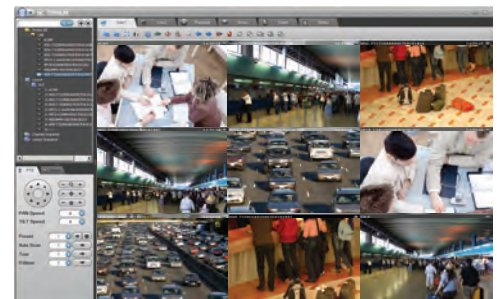
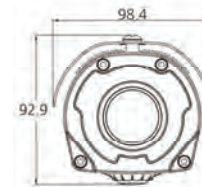
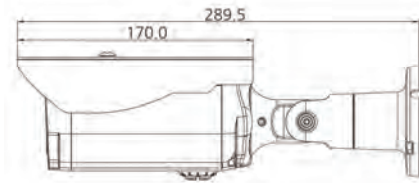
- > Designed to Capture License Plate Images at exceptional Video Quality with 2MP, Full HD, 1920 x 1080 Resolution
- > Sony Starvis CMOS Sensor with Progressive Scanning for Sharper Video Motion Images
- > Remote Focus and Zoom, Motorized 5.1 - 51mm Vari-focal Lens, eliminates need for Hands-on Fine Tuning
- > Triple Streaming up to 60-ips @1080p Resolution, using H.264 and MJPEG Compression
- > Powerful IR LED Lights for 0Lux Night-Time Operation up to 80ft Range
- > A built-in Micro-SD Card Slot enables Local Storage of Video
- > Advanced Intelligent Health Monitoring (AIHM) alerts User to Abnormal Conditions
- > Digital Noise Reduction (3D-DNR), Digital Image Stabilization (DIS) and 2-way Audio
- > Video Content Analysis (Video Analytics) features such as Line and Field Detector
- > Composite Video Output for Installation or Service Monitor
- > ATVision IP Remote Management Client Software for Windows and Mac and Mobile Applications for Apple and Android Operating Systems are included
- > ONVIF Profile S Compliant
- > IP66 Weather Resistant Rated Housing with Built-in heater and Through-Mount-Wiring (TCM)
- > PoE+ & 12VDC Power Option Capability

SPECIFICATIONS

MODEL		IPLPC2RI
C A M E R A	Image sensor	1/2.8" Sony Starvis CMOS Sensor
	Active Array	1945(H) x 1097(V)
	Lens	Motorized Varifocal 5.1mm ~ 51.0mm
	Angle of View	54.0°(H) ~ 4.9°(V)
	Scanning Mode	Progressive Scan
	Noise Reduction	2DNR, 3DNR
	Digital Zoom	16x
	Image Effect	Flip (Digital), Defog, Digital Image Stabilization (DIS)
	Shutter Speed	1/50,000 ~ 8 sec
	IR Illuminator	Quantity 32 IR LEDs; Angle 78°, Distance 65-80ft (25m) *
N E T W O R K	Compression	H.264 (Baseline, Main, High Profile), MJPEG
	Resolution	1920x1080 ~ 320x240
	Frame Rate	Max. 50fps/60fps
	Streaming	50/60fps (Dual Stream : H.264 x 1, MJPEG x 1) 25/30fps (Triple Stream : H.264 x 2, MJPEG x 1)
	Audio	2-Way, G.711 Compression
	Video Contents Analysis	Face Detector, Tampering, Line Detector, Field Detector
	Motion Detection Area	16 Programmable Areas (Include Area 8, Exclude Area 8)
	Privacy Mask Zone	16
	Zoom Presets	256 (13 Pre-programmed presets for 3 – 15m range)
	Event Notification	E-mail, FTP, Notification Server, XML Notification, Audio Alert, AIHM
	Security	Multi User Authority, IP Filtering, HTTPS, SSL
	Network Time Sync	NTP Server, Synchronized Computer, Manual
	Micro-SD Card Recording	Event, Continuous
	Protocols	TCP/IP, UDP, IPv4/v6, HTTP, HTTPS, QoS, FTP, UPnP, RTP, RTSP, RTCP, DHCP, ARP, Zeroconf, Bonjour
	Software	Web, SmartManager, ATVision IP client and Mobile
Max. User Connection	Live : 10 Users, Playback : 3 Users	
Compatible 3rd Party VMS	See link on www.atvideo.com	
G E N E R A L	Video Output	1.0Vp-p @ 75ohm (CVBS) - 3.5pi Stereo Jack
	Micro-SD Card	Micro-SDHC class 6 or above recommended (Max. 32GB)
	Ethernet	RJ-45 (10/100Base-T)
	Audio	1 Input, 1 Output (Terminal Block)
	Alarm	1 Input, 1 Output (Terminal Block)
	Operating Temperature	-22° - 122°F (-30° - 50°C)
	Operation Humidity	0~90% (non-condensing)
	Power Supply / Consumption	PoE(IEEE802.3at class4 only), 12VDC; 0.47A (23W) @ PoE or 1.6A (20W) @ 12VDC (with heater)
	Environmental Rating	IP66
	External Dimension (WxHxD)	10.7 x 3.3 x 3.9in (272 x 85 x 100mm)
Unit Weight	2.6lbs (1.2kg)	
Conformity Certifications	UL, FCC, CE	

* Maximum possible range in the best of conditions. Actual experience may vary depending on application and the environment.

DIMENSIONS



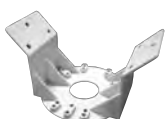
ATVision IP Remote Management Software

Minimum System Requirements for ATVision IP Software

- Operating System: Microsoft Windows 7 (or 8) Professional/Enterprise/Ultimate
- CPU: Intel Core i7; RAM: 4GB; Ethernet Connection: 1Gbps
- Graphics Card: Gaming Rated, with 1GB at 1080p for Single Monitor; 2GB at 1080p for Multiple Monitors
- HDD's: 7200RPM and 64MB cache; 1 separate HDD for Operating System and Software; and 1 (2TB) HDD for Recording (refer to IP storage calculator)

ACCESSORIES

- A-CM150 Corner Mount
- A-CM151 Pole Mount



A-CM150



A-CM151



Typical Day



Typical Night