



TV-IP460PI (V1.0R)

SETUP INFO

UPC #	710931111330
Master Carton UPC #	10710931111337
Product Page	http://www.trendnet.com/products/product-detail.asp?prod=110_TV-IP460PI
Additional Images	http://www.trendnet.com/support/support-detail.asp?prod=110_TV-IP460PI
Alternate Product Name	Multi-Sensor H.265 1080p PoE+ PTZ Camera, 1x 2MP PTZ Camera (2.8-12mm optical zoom), 3x 2MP Fixed Cameras (2mm), 360° video coverage, IR Night Vision up to 10m (33 ft.), Micro SD Card Slot
Key Search Words	smart IR, Night vision 10m, IR, Infrared, 1920 x 1080, 2 megapixel, 2MP, 4x2MP, HD, PoE+, 1080p, Power over Ethernet, email alerts, motion detection, scheduled recordings, H.265, H.265+, H.264, H.264+, MJPEG, tamper detection, logs, micro SD card slot, outdoor, microSD, D-WDR, IPv6, ONVIF, Samba, digital noise reduction, Smart IR, BLC, Backlight control, indoor cam, HD, camera, ip camera, network camera, IR camera, email alerts, remote viewing, remote surveillance, remote home surveillance, NVR ready, NVR compatible, TV-NVR408, TV-NVR416, TRENDnetView EVO, Dome camera, multi-sensor
Package Dimensions	23.4 x 23.3 x 19.5 cm (10 x 10 x 8 in.)
Package Weight	2.67kg (6.49 lbs)
Unit Qty per Case	10
Case Dimension	120 x 25 x 41cm (48 x 10 x 17 in.)
Case Weight	24.30kg (59 lbs.)
Harmonized Tarriff Code	8525803010
ECCN	5A991
Country of Origin	China
Product Availability Date	April 2019
Warranty	3 year
MSRP	\$699.99



Multi-Sensor H.265 1080p PoE+ PTZ Camera

TV-IP460PI (v1.0R)

- One 2MP PTZ sensor
 - HD video (1920 x 1080) at 20 fps
 - Focal Length: 2.8 – 12mm
 - 4x optical zoom and 8x digital zoom
 - Intelligent 3D Zoom with Auto-Focus
 - Focal length: 2mm
- Three 2MP Fixed sensors
 - HD video (1920 x 1080) at 20 fps
- Smart IR LED for night vision up to 10m (33 ft.)
- Digital Wide Dynamic Range image balancing
- Save installation costs with Power over Ethernet (PoE)
- Program motion detection recording and email alerts
- Micro SD card slot (up to 256GB, not included)
- Free iOS® and Android™ mobile apps

TRENDnet's Multi-Sensor H.265 1080p PoE+ PTZ Camera, model TV-IP460PI, provides day and night surveillance with a night vision range of up to 10m (33 ft.). This multi-sensor HD surveillance camera features one 2MP PTZ lens with 4x optical zoom and three 2MP fixed lenses, surrounding the camera base to provide 360° of video coverage. With one surveillance camera effectively working as if it were four, the multi-sensor HD surveillance camera is best placed in the center of a room. Each camera sensor records up to 2MP HD video at 20 fps in space saving H.265 compression format. View live video of the multi-sensor HD surveillance camera from your mobile device using our free mobile apps, or from your Windows® PC with our complimentary and pro-grade desktop camera management software.



Multi-Sensor Camera

This multi-sensor HD surveillance camera features one 2MP PTZ lens with 4x optical zoom and three 2MP fixed lenses, surrounding the camera base to provide 360° of video coverage.



Optical Zoom PTZ

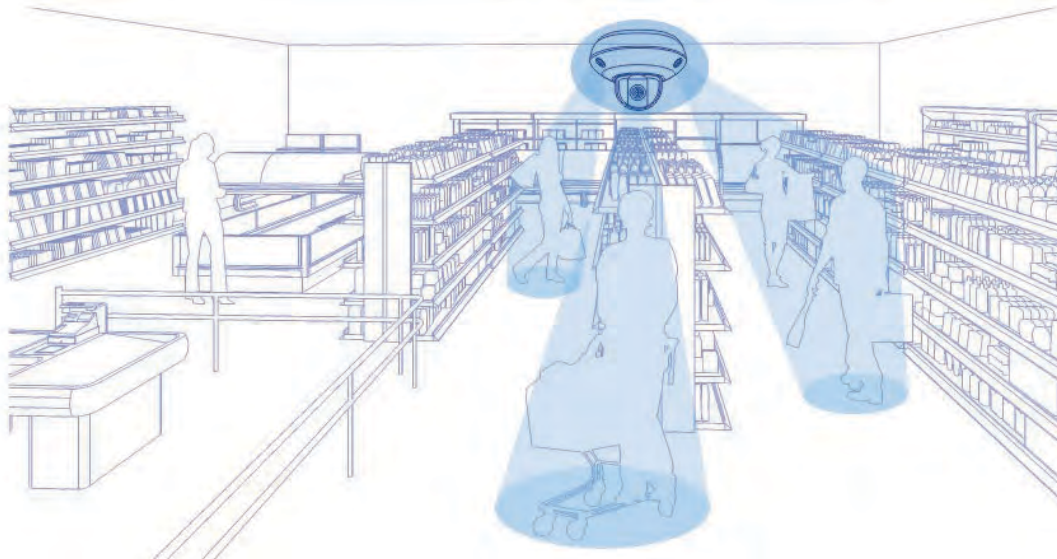
The built-in 4x optical zoom PTZ lens allows you to adjust the field of view from 120° – 56.6° to achieve the ideal viewing field for your installation.



Power over Ethernet (PoE+)

PoE+ offers cost savings and the flexibility to install this IR network camera up to 100m (328 ft.) from the PoE+ source equipment.

NETWORKING SOLUTION



FEATURES



Multi-Sensor HD Surveillance Camera

This multi-sensor HD surveillance camera features one 2MP PTZ lens with 4x optical zoom and three 2MP fixed lenses, surrounding the camera base to provide 360° of video coverage



PoE+

Save installation costs with Power over Ethernet (PoE+)



Event Triggers

Create custom motion detection, intrusion detection, and crossing line detection zones to record video and send email notifications when an event is triggered



Optical Zoom Lens

Built-in 4x optical zoom PTZ lens allows you to adjust the field of view from 120° – 56.6°



Storage

Record video to a network storage device or to a Micro SD card (up to 256GB, not included)



Digital Wide Dynamic Range (DWDR)

Adjustable DWDR setting improves image quality when a camera is exposed to high contrast lighting environments by enhancing the dark areas of the image to make them more visible



Smart IR

Smart IR dynamically adjusts the infrared (IR) LEDs by lowering IR intensity when objects are near, and increasing IR intensity when objects are farther away. Night-time viewing up to 10m (33 ft.) away



Advanced Playback

Multi-sensor-HD surveillance camera features advanced in-camera archived video playback functionality



Recording Flexibility

Define custom schedules using continuous (24/7) and event-based recording modes

SPECIFICATIONS

Fixed Lens

- Focal length: 2mm @ F2.0
- Sensor: 1/2.8" CMOS sensor
- DWDR: 50dB
- Horizontal viewing angle: 128.5°

PTZ Lens

- Focal length: 2.8 – 12mm @ F2.0 – F2.4
- Sensor: 1/2.8" CMOS sensor
- Optical zoom: 4x
- Digital zoom: 8x
- DWDR: 50dB
- Horizontal viewing angle: 120° – 56.6° (wide – tele)
- Pan: 0° ~ 350°
- Tilt : 0° ~ 90°
- Min. distance: 10mm – 1500mm (wide – tele)

Hardware Standards

- IEEE 802.1x
- IEEE 802.3
- IEEE 802.3u
- IEEE 802.3x
- IEEE 802.3at

Minimum Illumination

- IR off: 0.01 lux
- IR on: 0 lux
- IR distance: 10m (33 ft.)
- IR LED wavelength: 850nm

Compression

- H.265+ / H.265
- H.264+ / H.264
- MJPEG

Resolution

- Main stream: H.265+/H.265/H.264+/H.264: 1920 x 1080 up to 20 fps
- Sub stream: H.265/H.264/MJPEG: 704 x 480 up to 20 fps

Device Interface

- 10/100Mbps PoE+ port
- Micro SD card slot
- 3.5mm microphone / speaker jacks
- Power jack
- Reset button

Micro SD slot

- Supports Micro SD/SDHC/SDXC (not included)
- Up to 256GB

Audio

- 2-way audio
- 3.5mm microphone / speaker jacks (mic and speaker not included)

Protocole réseau

- IPv4, IPv6, UDP, TCP/IP
- DHCP, NTP, DDNS, SMTP, FTP, LLTD
- SNMP v1, v2c, v3, QoS/DSCP, IEEE 802.1X
- NFS, SMB/CIFS
- HTTP, HTTPS
- PPPoE
- UPnP, RTSP, RTP

Standard

- ONVIF Profile S compliant

Dimension

- 183 x 133.2 x 133.2mm (7.2 x 5.25 x 5.25 in.)

Weight

- 0.9kg (2 lb.)

Operating Temperature

- -10° – 50° C (14° – 122° F)

Humidity

- Max. 90% non-condensing

Power

- Input: PoE+
- Max. consumption: 24W

Management Interface

- Multi-language support: English, French, German, Spanish, and Portuguese
- Image settings: Brightness, Contrast, Saturation, Sharpness, Exposure Time, image Gain, Day/Night switch, Smart IR, BLC, WDR, white balance, Digital Noise Reduction, Mirror, Rotate, Scene Mode, Video Standard
- DWDR enhances video quality in high contrast daytime lighting
- Digital Noise Reduction removes digital noise from the video signal
- Recording: to computer, micro SD, or SAMBA share
- Time, date, and text overlay
- IP Address Filter
- Video Recording: scheduled, motion detection, face detection, intrusion detection, crossing line detection, and tamper detection
- Motion detection: define motion detection areas and motion sensitivity
- Privacy masks: define custom privacy masks
- Tamper detection function: email notification
- Snapshot: real time snapshot and motion triggered
- Supported dynamic DNS services: dyn.com and no-ip.com
- Supports remote management
- Compatible browsers: Internet Explorer® or Safari®

TRENDnetVIEW EVO Software

- Supports up to 32 TRENDnet cameras
- Multiple language support
- Set recording options (motion detection, schedule, event trigger)
- Search and playback
- Custom viewing modes and options
- Compatibility: Windows® 10, 8.1, Windows Server® 2012, 2008

TRENDnet IPVIEW App

- Free iOS® and Android™ apps
- View live camera video on a mobile device
- Take snapshots
- Zoom

Certifications

- CE
- FCC

Warranty

- 3 year

Package Contents

- TV-IP460PI
- Quick installation guide
- Camera mounting hardware