

## S&G 2890B

S&G 2890B, built to Federal Specification FF-L-2890B, is an integrated door lock designed to meet both security and life safety demands of highly sensitive SCIF environments.



### CASE & LATCH BOLT STRENGTH TESTING

1200 lbs In Two Directions (Inswing / Outswing)  
 350 lb Latch bolt end Pressure

### VIBRATION & MOISTURE ABSORPTION TEST

Tested to MIL-STD-810

### MEETS ADA/LIFE SAFETY/UL SPECIFICATION

UL 305 Panic Hardware  
 Compliant to ADA 2010 where applicable  
 ANSI/BHMA A156.2 - Grade 1  
 ANSI/BHMA A156.3 - Grade 1  
 ANSI/BHMA A156.36 - Grade 1  
 Intuitive single motion egress on all models at all times

### ACCESS CONTROL

Unit allows Badge-in / Badge-out (with alarm module allows audit of daily use)  
 Key bypass may be used with all access control models

### MATERIALS

Bolt - Stainless steel  
 Housings - Aluminium, Zinc, and Stainless Steel  
 Mechanism parts - stainless steel  
 Strike Stainless Steel with Roller Bearing

### LOCK BOLT THROW

5/8"

### DOOR THICKNESS

Standard 1-3/8" - 2"  
 Max Door Thickness with Thick Door Kit 3.5"

### DOOR TYPES

Single / Double  
 Inswing / Outswing  
 Hollow Metal / Wood / Metal or Wood Frame  
 Acoustical Doors / With Seal May require special brackets

### HANDING

Right - Left interchangeable

### ACCESS CONTROL

Supply Voaltage 12 - 24  
 12V - Inrush 500Ma - Holding Current 250Ma  
 24V - Inrush 300Ma - Holding Current 170Ma

### ENVIRONMENTAL

Operating Range -10F to 158F  
 10 - 98% RH

### WEIGHT

With Lever Handle ~ 29lbs  
 With Panic Bar ~ 38lbs

### LOCK COMPATABILITY

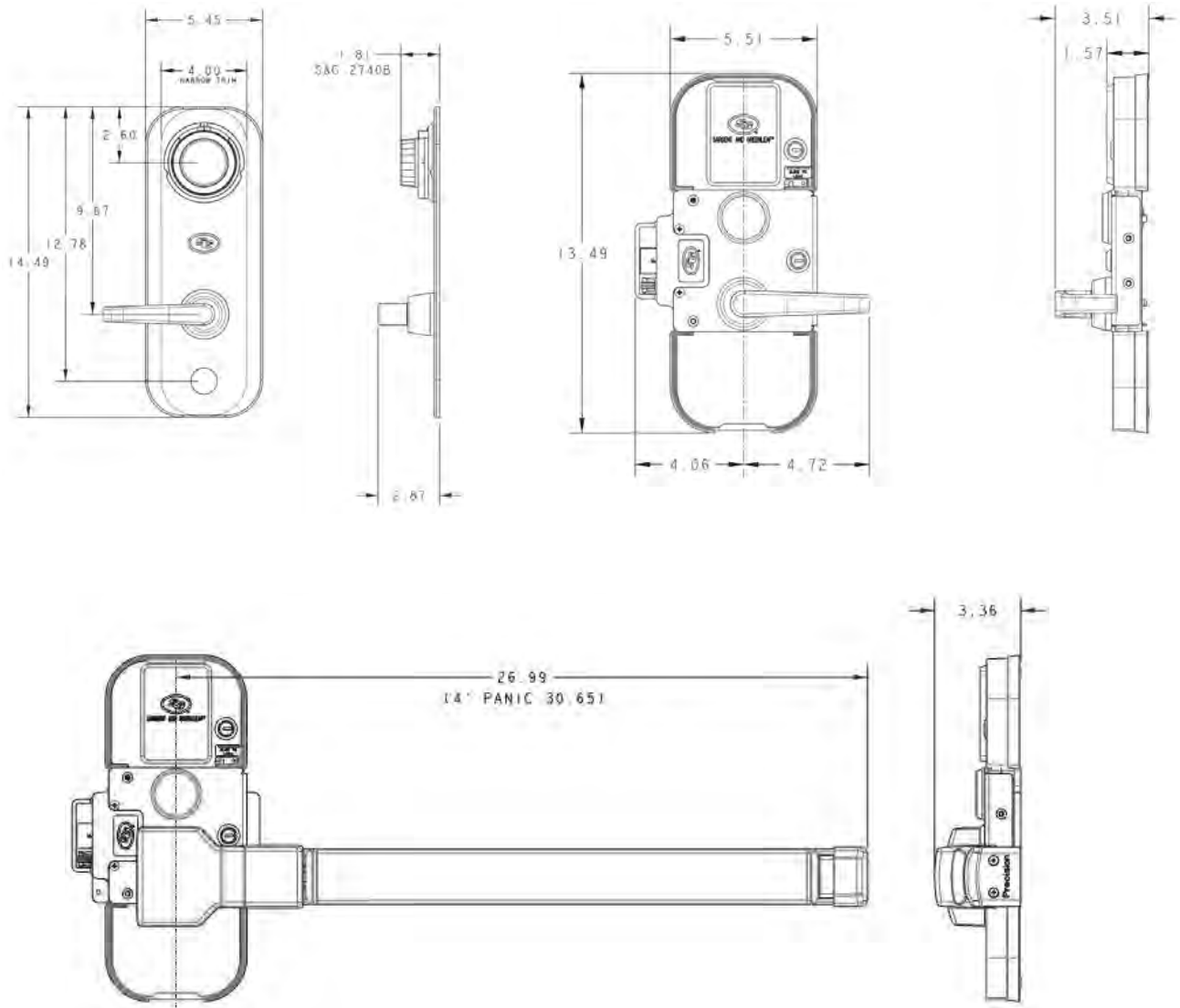
S&G 2740B (FF-L-2890B compliant)  
 Kaba X-10 (FF-L-2890B compliant)  
 S&G Titan Direct Drive (Model 2007)  
 S&G Audit Lock 2.0 (Model 3007)  
 S&G Model 6125  
 S&G A-Series (Model 6129)  
 S&G Model 8560-108  
 Other square bolt locks (non FF-L-2890B compliant)

### PERFORMANCE CERTIFICATIONS

UL 10B  
 UL 10C  
 NFPA 101 Life Safety  
 3 hr rating  
 Panic Bar 500K cycles  
 Lever Handle 1M cycles

# S&G® 2890B

## Lock Specifications



### SUPPORTING HARDWARE (OPTIONAL):

Alarm Integration Kit  
 Alarm Integration Kit with Dial Rotation Detection  
 Exit Only Panic Bar

### PART NUMBERS:

2890-640  
 2890-641  
 2890-630

[www.sargentandgreenleaf.com](http://www.sargentandgreenleaf.com)

Corporate Headquarters: One Security Drive • Nicholasville, Kentucky 40356 • USA • Tel. 859-885-9411, Fax 859-887-2057  
 Except as otherwise noted, all trademarks in this data sheet are trademarks of Stanley Black and Decker or its affiliates in the U.S. and elsewhere.  
 ® denotes a trademark registered in the U.S. Patent and Trademark Office. Patents Pending.



2890B Spec Sheet SG-1042  
 © 2017 Sargent & Greenleaf, Inc.