

Introducing **150 Series CompX eLock**



Revolutionizing Electronic Access Control



CompX eLock® meets Joint Commission requirements!

options:

- ◆ Door switch provides instant notification of unauthorized entry or door ajar alerts
- ◆ Using latch splitter, eLock is capable of operating two latches or doors

Network units also available.
Visit compxelock.com for all eLock solutions.

150 series eLock®

Keyless, non-network, electronic access control solution for cabinetry.

The CompX eLock® for cabinetry can be used in various applications; drug and supply cabinets, key control boxes, medical & personnel records.

all versions feature:

- ◆ Audit trail of last 1,500 access attempts with date, time and user name
- ◆ 250 user/supervisor codes
- ◆ Three modes of access: Keypad, Proximity card* HID or iCLASS HID *Use existing identification cards
- ◆ Motor driven latching mechanism
- ◆ 6-AA battery pack; premium brand Alkaline batteries recommended (not included)
- ◆ Low battery indicator
- ◆ Jump start battery override available through mini USB communications port allows the user, with a valid credential, to access the CompX eLock® when the batteries are exhausted
- ◆ Audible alarm bolt system
- ◆ Mini USB communications port for audit trail download with **optional** LockView 5 software
- ◆ Compatible with 12-volt electric door strikes to control access on interior doors

LockView SOFTWARE

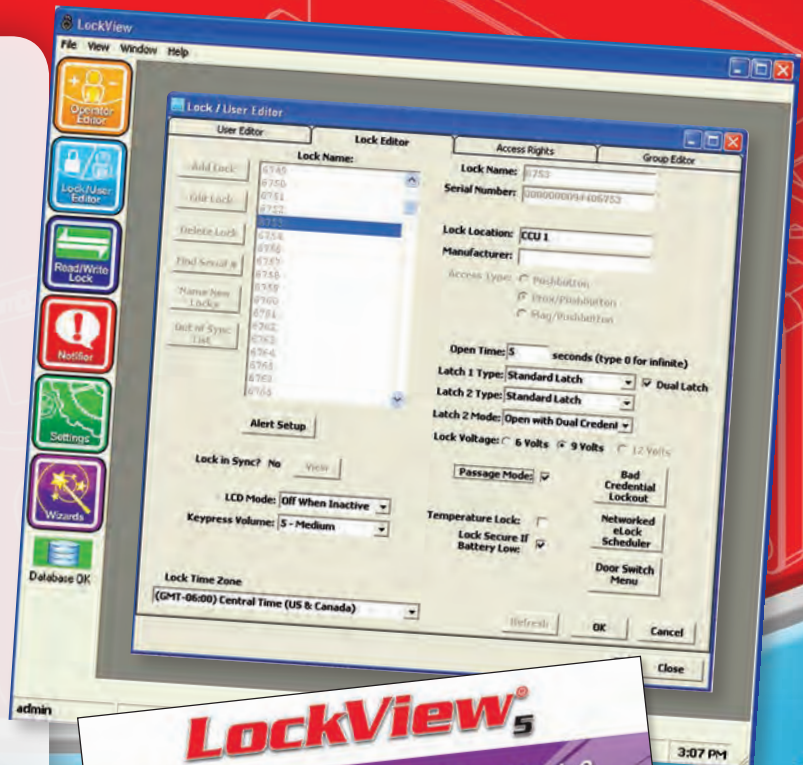
LockView® 5 software features:

LockView® makes it easy to monitor audit trails for the last 1,500 access attempts, manage users and eLocks, and assign time-based restrictions and dual credential access. Downloading and uploading information is simple. Attach mini USB to communications port on eLock and standard USB to laptop.

- ◆ Provides a comprehensive audit trail of the last 1,500 access attempts; including date, time and user name
- ◆ Complies with Joint Commission standards and is 21 CFR Part 11 compliant
- ◆ When connected, LockView sends updates to the eLock. Updates can include:
 - User changes (Add / Delete / Modify Credentials)
 - eLock Changes (Add / Delete / Modify eLocks)
 - Access Rights changes
- ◆ LockView software sold separately

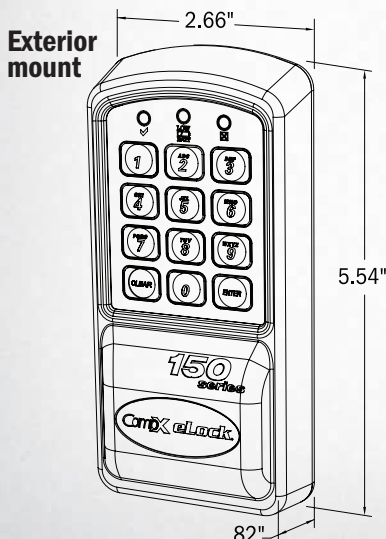
Minimum System Requirements

2GB RAM, 2GB free space on hard drive, 64bit Compatible, OS: Windows XP, Vista, 7. Pentium III 1.0 GHz or higher. Other configurations are acceptable; please consult factory for detailed information.

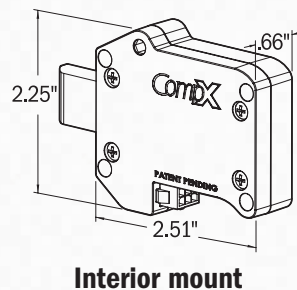


150 series **cabinet** eLock has three components:

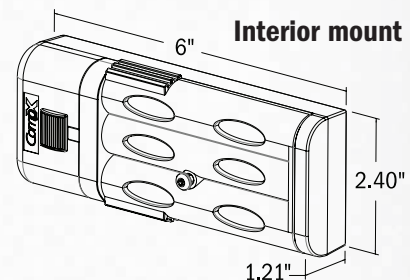
Controller



Motorized gear-driven latch



Battery compartment



CompX
SECURITY PRODUCTS



Reorder #: F2644-035

Copyright 2016 © CompX Security Products / 847.752.2500 / compx.com / 715 Center St., Grayslake, IL 60030
Any companies and/or products referred to herein are marks or registered trademarks of their respective companies, owners and/or mark holders.

For more information, call **847.752.2500**