

NOTE: LCN recommends for all jamb mount actuators be used on an interior installation only.

Automatic Operator Actuators & Accessories



8310-818
Jamb Mounted Actuator

- Hardwired low voltage actuator with rectangular stainless steel touch plate.
- 1-1/2" (38mm) wide by 4-3/4" (121mm)
- Engraved blue filled handicap symbol conforms to most accessibility codes
- Designed to mount in a frame cutout (template provided) projecting approximately 1/2" (12mm) from the frame
- Optional mounting in surface or flush mount box (sold separately)
- Heavy industrial grade components provide vandal resistant mounting and weather resistant switch standard



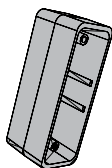
8310-818T
Jamb Mounted Actuator

- Same as the 8310-818, with the added engraving of "Push to Open"



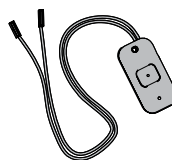
8310-819F
Flush Mount Box

- Rugged Plastic Jamb Box
- 1-1/2" x 4-3/4" rectangle, optional accessory - can be used w/ any 1-1/2" x 4-3/4" jamb mount actuator



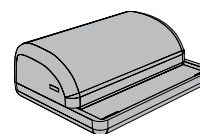
8310-819S
Surface Mount Box

- Rugged Plastic Jamb Box
- 1-1/2" x 4-3/4", rectangle
- Optional accessory - can be used w/ any 1-1/2" x 4-3/4" jamb mount plastic mounting box



8310-844J
Transmitter

- Wireless, 1 Channel, Jamb Mount, 3v battery included
- Used to convert standard jamb mount actuator to wireless when used w/ 819F or 819S boxes. Requires 8310-865 Receiver (interior use only)



8310-865
Receiver

- Wireless, 1 Channel, w/ Sequencing Feature
- Used in conjunction w/ Wireless Actuators & Transmitter(s)