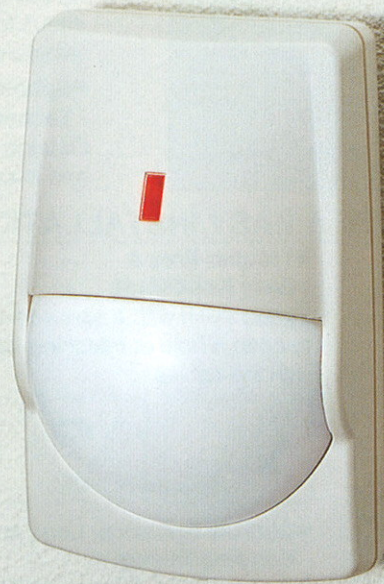




PASSIVE INFRARED DETECTOR W/ PET IMMUNITY

RX-40PI

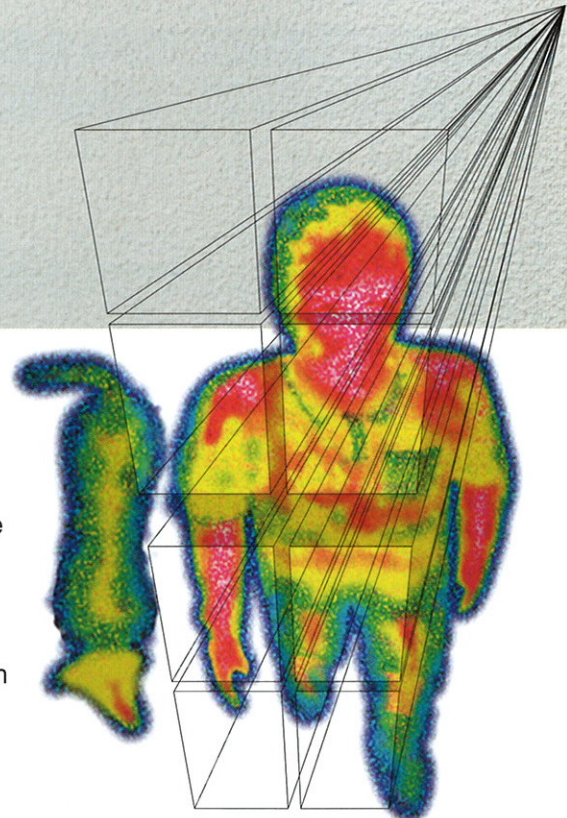
UL LISTED



**Pet Immunity to Cats
and Small to Medium
sized Dog**

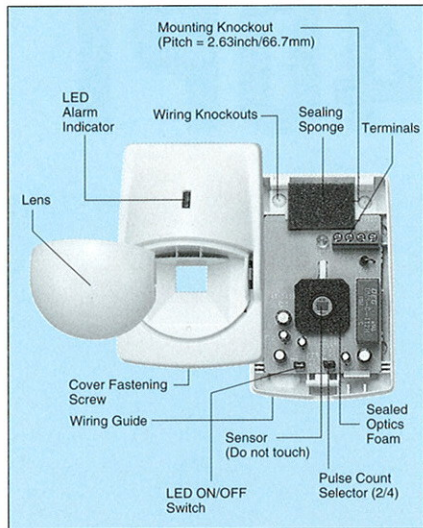
QUAD ZONE LOGIC

Optex improves its patented "Multifocus Optics" technology to create "Quad Zone Logic" for accurate detection of humans. Using this logic the RX-40PI has been designed to give extremely high false alarm protection with tolerance to spot temperature changes from curtains or small to medium size animals. Optex's Optical Quad Technology uses taller detection zones divided into upper and lower areas. It detects IR energy changes in both areas and then couples them for extremely accurate detections. Offering very high reliability in hostile areas.



Passive Infrared Detector w/Pet Immunity

RX-40PI

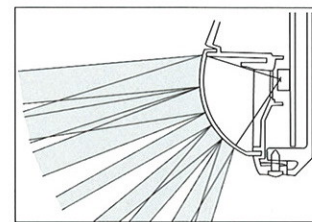
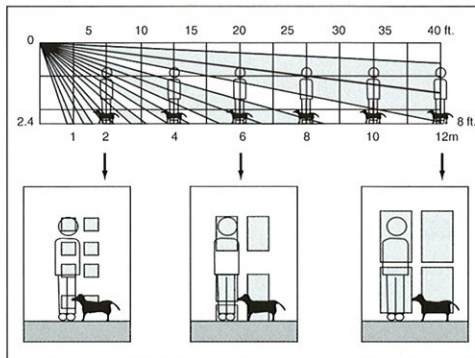


FEATURES

TECHNOLOGY FOR HIGHEST RELIABILITY

●Quad Zone Logic - Recognized Humans and Ignores Most Small Animals

Quad Zone Logic provides multi segmented detection zones over the detection area. An alarm signal is created by the cumulated total IR energy of each zone. It is designed so that a human size target will normally fill 4 to 8 zones, and this will cause an alarm to be generated. Any smaller temperature change (i.e. small to medium size pets, rodents or moving curtains) only activates one or two zones at the same time creating a much weaker detection signal. Pet immunity applies to animals 0 to 16 inches in height. These signals are further analyzed by the "ECO" Chip and signal processing circuit for accurate detection of humans and avoidance of most small animals.



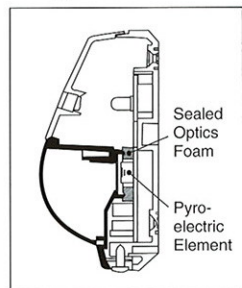
●Spherical Lens

- Technology to Back Up Quad Zone Logic

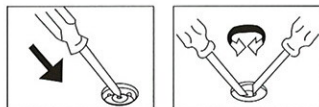
Obtains an accurate focal length for each detection zone and maximizes the performance of Quad Zone Logic.

TROUBLE-FREE & EASY INSTALLATION

●Sealed Housing
Prevents drafts and insects from reaching the pyro element.



●Trouble-Free & Easy Knockouts
Simply push with a screwdriver to open a hole of matching size with the cables.



●Durable Spherical Lens and Housing Design
●Good Wiring Space and Guide
●Selectable Pulse Count : 2 or 4
●LED On/Off Switch

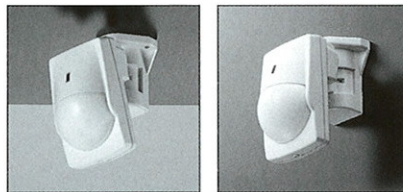
PERFORMANCE

●RFI Protection
No alarm at 20V/m from 100MHz to 1 GHz

●Temperature Compensation Logic

Eco chip includes temperature compensation circuit. It controls sensitivity to improve stability against changes in environmental conditions.

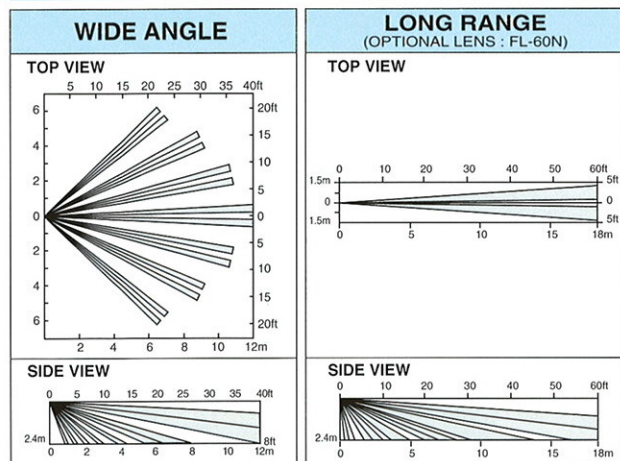
■Optional Multi-Angle Bracket



FA-3
Wall & Ceiling Mounting Bracket
Horizontally ±45°, Vertically 0° to 15° downwards

FL-60N
Long Range (Extremely Dense Multi Layer Curtain Lens)
(Pet Immunity is not available with FI-60N)

DETECTION PATTERNS

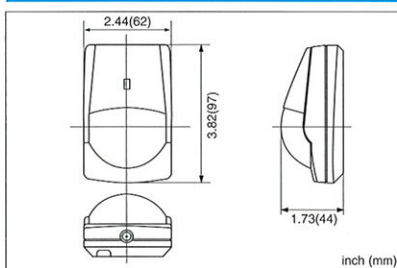


SPECIFICATIONS

| | |
|------------------------|---|
| Model | RX-40PI |
| Detection Method | Passive Infrared |
| Coverage | Wide: 40ft x 40ft (12m x 12m), 85° wide |
| Detection Zones | Wide: 78 zones |
| Mounting Height | 5 ~ 8ft (1.5 ~ 2.4m) |
| Sensitivity | 3.6° F (2° C) at 2ft/sec. (0.6m/sec.) |
| Detection Speed | 1 ~ 5ft/sec. (0.3 ~ 1.5m/sec.) |
| LED Alarm Indicator | Switchable On/Off |
| Alarm Period | Approx. 2.5 sec. |
| Alarm Output | N.C., 28VDC, 0.2A max. |
| Pulse Count | Approx. 20 sec. 2 or 4 |
| Warm-up Period | Approx. 30 sec. |
| Power Input | 9.5 ~ 16VDC |
| Current Draw | 8mA(normal), 11mA(max.)at 12V DC |
| Weight | 2.5 oz. (70g) |
| Operating Temperature | -4° F ~ +122° F (-20° C ~ +50° C) |
| Environmental Humidity | 95% max. |
| RF Interference | No Alarm 20V/m |

| | |
|--|--|
| *FL-60N (Optional Lens for Long Range Curtain Pattern) | |
| Coverage | LONG: 60ft x 6ft (18m x 1.8m) Long Range |
| Detection Zones | LONG: 20 zones |

DIMENSIONS



●Specifications and design are subject to change without prior notice.
NOTE: This unit is designed to detect movement of an intruder and activate an alarm control panel. Being only a part of a complete system, we can not accept responsibility for any damages or other consequences resulting from an intrusion. This product conforms to the EMC Directive. 89/336 EEC.
NOTE: Pet immunity is effective only when the unit is installed according to the installation instructions supplied with the unit.



OPTEX CO., LTD. (ISO 9001 Certified by LRQA)
4-7-5 Nionohama Otsu Shiga, 520-0801 Japan
TEL (077)524-6047 FAX (077)522-9022
http://www.optex.co.jp/e

OPTEX INCORPORATED
1845W. 205th Street Torrance, CA 90501-1510 U.S.A.
TEL (310)533-1500 FAX (310)533-5910
http://www.optexamerica.com

OPTEX (EUROPE) LTD. (ISO 9002 Certified by NQA)
Clivemont Road, Cortwallis Park, Maidenhead, Berkshire, SL6 7BU U.K.
TEL (01628)631000 FAX (01628)636311
http://www.optexeurope.com



"Take Care of the Environment"
This catalogue uses recycled paper