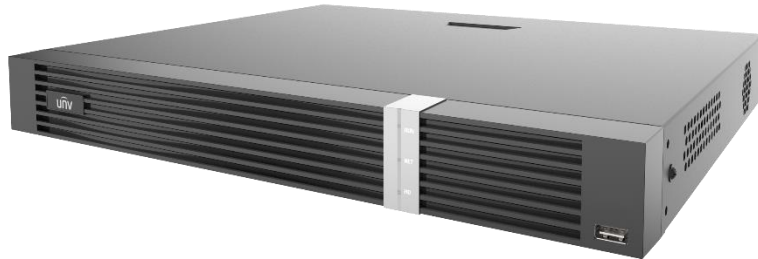


# Network Video Recorder

## NVR302-E2-P-IQ Series



### Key Features

- Support Ultra H.265/H.265/H.264 video formats
- 8/16-channel input
- Plug & Play with 8/16 independent PoE network interfaces
- Supports mainstream cameras of ONVIF conformance(Profile S, Profile G, Profile T ) and RTSP protocols
- Support 1-ch HDMI, 1-ch VGA. HDMI up to 4K (3840x2160) resolution
- Support HDMI and VGA simultaneous output
- Up to 12 Megapixels resolution recording
- 2 SATA HDDs, Up to 10TB for each HDD
- Various fisheye dewarping modes for live view and playback for both web interface and GUI
- ANR technology to enhance the storage reliability when the network is disconnected
- Support cloud upgrade

## Specifications

| Model                       | NVR302-08E2-P8-IQ  | NVR302-16E2-P16-IQ |
|-----------------------------|--|--------------------|
| <b>Video/Audio Input</b>    |  |                    |
| IP Video Input              | 8-ch   | 16-ch              |
| Two-way Audio Input         | 1-ch, RCA  |                    |
| <b>Network</b>              |  |                    |
| Incoming Bandwidth          | Smart Off: 320Mbps<br>Smart On: 160Mbps  |                    |
| Outgoing Bandwidth          | Smart Off: 320Mbps<br>Smart On: 160Mbps  |                    |
| Remote Users                | 128  |                    |
| Protocols                   | TCP/IP, P2P, UPnP, NTP, DHCP, PPPoE, HTTP, HTTPS, DNS, DDNS, SNMP, SMTP, NFS   |                    |
| Browser                     | IE(IE10/11) for Windows<br>Firefox (version 52.0 and above) for Windows<br>Chrome(version 45 and above) for Windows<br>Edge(version 79 and above) for Windows  |                    |
| <b>Video/Audio Output</b>   |  |                    |
| HDMI/VGA Output             | VGA:<br>1920x1080p/60Hz, 1920x1080p/50Hz, 1600x1200/60Hz, 1280x1024/60Hz, 1280x720/60Hz,<br>1024x768/60Hz<br>HDMI:<br>4K (3840x2160)/30Hz, 1920x1080p/60Hz, 1920x1080p/50Hz, 1280x1024/60Hz, 1280x720/60Hz,<br>1024x768/60Hz |                    |
| Recording Resolution        | 12MP/8MP/6MP/5MP/4MP/3MP/1080p/960p/720p/D1/2CIF/CIF   |                    |
| Audio Output                | 1-ch, RCA  |                    |
| Audio Compression           | G.711A, G.711U   |                    |
| Synchronous Playback        | 8-ch   | 16-ch              |
| Live View Display           | 1/4/6/8/9  | 1/4/6/8/9/16       |
| Corridor Mode Screen        | 3/4/5/7/9  | 3/4/5/7/9/10/12/16 |
| <b>Snapshot</b>             |  |                    |
| FTP/Schedule/Event Snapshot | 16-ch snapshot, up to 1080P resolution   |                    |
| <b>Decoding</b>             |  |                    |
| Decoding Format             | Ultra 265, H.265, H.264  |                    |
| Live View/Playback          | 12MP/8MP/6MP/5MP/4MP/3MP/1080p/960p/720p/D1/2CIF/CIF   |                    |
| Capability                  | Smart Off: 1 x 12MP@30, 2 x 4K@30, 5 x 4MP@30, 10 x 1080P@30, 22 x 720P@30, 32 x D1<br>Smart On: 1 x 12MP@30, 2 x 4K@30, 4 x 4MP@30, 8 x 1080P@30, 18 x 720P@30, 32 x D1   |                    |
| <b>Hard Disk</b>            |  |                    |
| SATA                        | 2 SATA interfaces  |                    |
| Capacity                    | Up to 10TB for each disk   |                    |
| eSATA                       | NA   |                    |
| Disk Group                  | Support  |                    |

**Smart**

|                                       |  |
|---------------------------------------|--|
| VCA Detection by Camera               | Intrusion Detection, Cross Line Detection, Enter Area, Leave Area, Defocus Detection, Scene Change Detection, Object Left Behind, Object Removed, Auto Tracking, Ultra Motion Detection(UMD) |
| NVR Smart                             | Smart Intrusion Prevention (SIP), UMD  |
| VCA Search                            | Behavior Search, Vehicle Search  |
| People Counting                       | People Flow Counting, Crowd Density Monitoring   |
| SIP by NVR with normal cameras        | 4-ch   |
| UMD by NVR                            | 8-ch   |
| SIP, Vehicle Detection, UMD by Camera | Total 8-ch   |

**General Alarm**

|               |   |
|---------------|---|
| General Alarm | Motion, Tampering, Human Body Detection, Video Loss, Input Alarm, Audio Detection   |
| Alert Alarm   | IP Conflict, Network Disconnected, Disk Offline , Disk Abnormal, Illegal Access, Hard Disk Space Low, Hard Disk Full, Recording/Snapshot Abnormal |

**External Interface**

|                   |   |
|-------------------|---|
| Network Interface | 1 RJ45 10M/100M/1000M self-adaptive Ethernet Interfaces |
| USB Interface     | Front panel: 1 x USB2.0,Rear panel: 1 x USB3.0          |
| RS232             | NA  |
| RS485             | 1   |
| Alarm In          | 8-ch  |
| Alarm Out         | 2-ch  |

**PoE**

|                    |   |  |
|--------------------|---|--|
| Interface          | 8 RJ-45 10M/100M self-adaptive Ethernet Interface | 16 RJ-45 10M/100M self-adaptive Ethernet Interface |
| Max Power          | Max 30W for single port<br>Max 130W in total      | Max 30W for single port<br>Max 240W in total       |
| Supported Standard | IEEE 802.3af/at                                   |  |

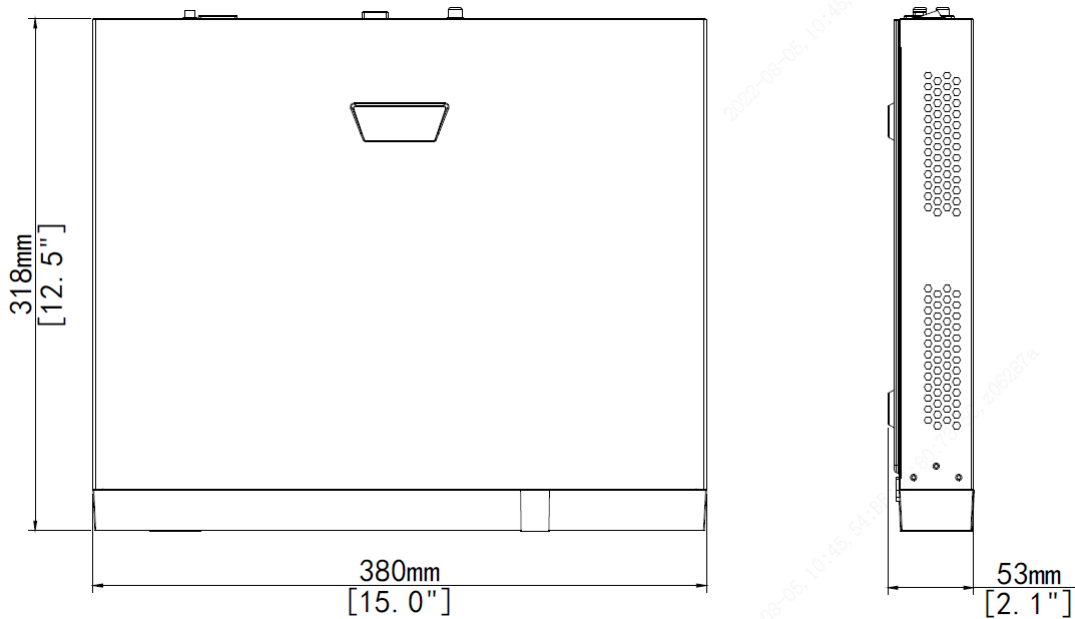
**General**

|                      |   |   |
|----------------------|---|---|
| Power Supply         | 52V DC/2.5A<br>Power Consumption: ≤ 15W (without HDD)           | 52V DC/4.6A<br>Power Consumption: ≤ 20W (without HDD) |
| Working Environment  | -10°C~+ 55°C (+14°F~+131°F), Humidity ≤ 90% RH (non-condensing) |   |
| Dimensions (W×D×H)   | 380mm × 318mm × 53mm (15.0" × 12.5" × 2.1")                     |   |
| Weight (without HDD) | ≤1.8Kg (3.97lb)   |   |

**Certification**

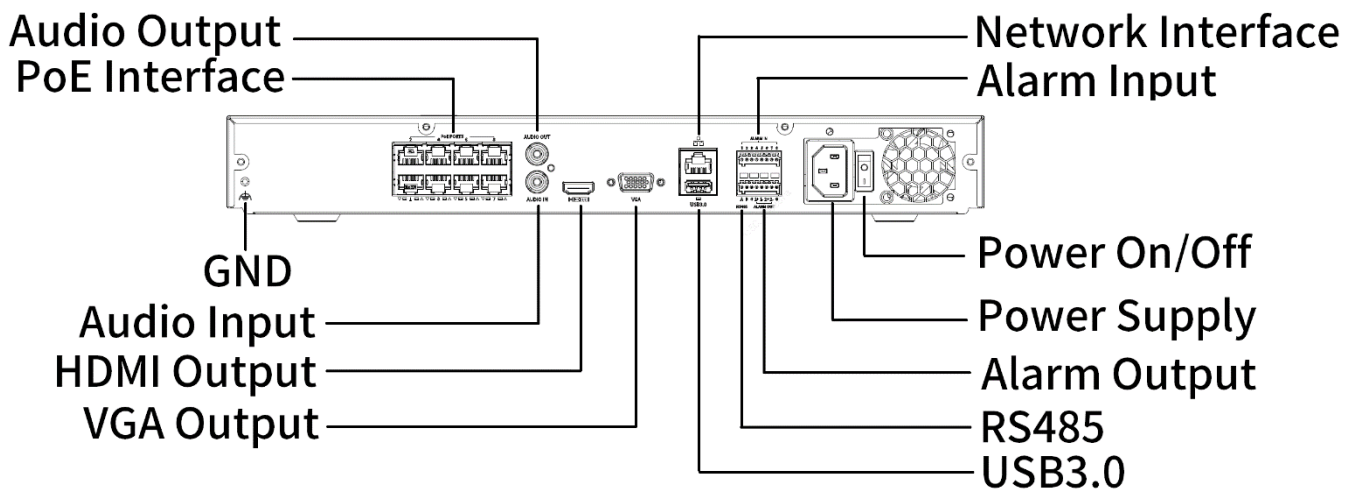
|               |  |
|---------------|--|
| Certification | CE, FCC, UL, RoHS, WEEE  |
| CE            | EN 55032: 2015, EN 61000-3-3: 2013, EN IEC 61000-3-2: 2019, EN 55035: 2017 |
| FCC           | Part15 Subpart B, ANSI C63.4   |

## Dimensions



## Rear Panel

Take NVR302-08E2-P8-IQ for example.



Zhejiang Uniview Technologies Co., Ltd.

Building No.10, Wanlun Science Park, Jiangling Road 88, Binjiang District, Hangzhou, Zhejiang, China

Email: [overseasbusiness@uniview.com](mailto:overseasbusiness@uniview.com); [globalsupport@uniview.com](mailto:globalsupport@uniview.com)

<http://www.uniview.com>

©2022 Zhejiang Uniview Technologies Co., Ltd. All rights reserved.

\* Product specifications and availability are subject to change without notice.