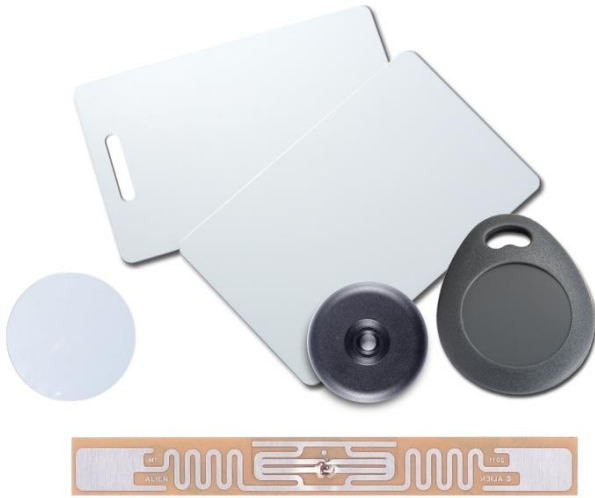


## GV-Access Card, Key Fob, Tag, Sticker, Mobile Card



GeoVision offers a wide range of access cards, key fobs, stickers, and tags to satisfy your needs. **GV-AS ID Card** and **GV-AS DES Card** are suitable for use in commercial environments where identification and access control are critical for security. **GV-AS ID Key Fob**, **GV-AS DES Fob**, and **GV-Tag Sticker** are perfect for home applications since they are intended for simple carrying and key replacement. **GV-UHF Tag** is ideal for managing parking lots. **GV-Patrol Fob** is excellent for patrol stations with high mobility that may be quickly deployed.

In addition, we offer the virtual access card **GV-Mobile Card**, which is used with the QR code reader GV-QR1352 and the GV-Mobile Access app to unlock doors with smartphones.

### KEY FEATURES

- 125 kHz cards and key fobs
- 900 MHz ISO 18000-6C UHF RFID tags
- 13.56 MHz ISO 14443A cards, key fobs, patrol fobs, and stickers
- 13.56 MHz MIFARE® DESFire® cards, and key fobs
- Virtual access cards

Model Name	Type	Compatible Devices
GV-AS ID Card / Key Fob	125 kHz	<b>GV-Reader:</b> GV-DES1352 / GV-SR1251 / GV-SR1352 / GV-QR1352 <b>GV-Enrollment Reader:</b> GV-PCR1251
	13.56 MHz	<b>GV-AS Controller:</b> GV-AS1010 / GV-CS1320 <b>GV-Reader:</b> GV-CR1320 / GV-DES1352 / GV-DFR1352 / GV-FR2020 / GV-R1352 / GV-RK1352 / GV-QR1352 / GV-RKD1352 / GV-R1354 / GV-DFK1355 / GV-R1355 / GV-RKR1355 / GV-RKV1355 / GV-SR1352 <b>GV-FR Panel:</b> GV-FR Panel <b>GV-GF Fingerprint Reader (Card Only Mode):</b> GV-GF1922 <b>GV-Enrollment Reader:</b> GV-PCR1352
GV-AS DES Card / Fob	MIFARE® DESFire®	<b>GV-Reader:</b> GV-DES1352 / GV-RKD1352 / GV-R1354 / GV-DFK1355 / GV-R1355 / GV-RKR1355 / GV-RKV1355 / GV-QR1352
GV-Patrol Fob	13.56 MHz	<b>GV-AS Controller:</b> GV-AS1010 / GV-CS1320 <b>GV-Reader:</b> GV-CR1320 / GV-DES1352 / GV-DFR1352 / GV-FR2020 / GV-R1352 / GV-RK1352 / GV-QR1352 / GV-RKD1352 / GV-R1354 / GV-DFK1355 / GV-R1355 / GV-RKR1355 / GV-RKV1355 / GV-SR1352 <b>GV-FR Panel:</b> GV-FR Panel <b>GV-GF Fingerprint Reader (Card Only Mode):</b> GV-GF1922 <b>GV-Enrollment Reader:</b> GV-PCR1352
GV-Tag Sticker	13.56 MHz	<b>GV-FR Panel:</b> GV-FR Panel <b>GV-GF Fingerprint Reader (Card Only Mode):</b> GV-GF1922 <b>GV-Enrollment Reader:</b> GV-PCR1352
GV-UHF Tag	900 MHz	<b>GV-AS Controller:</b> GV-AS1520 <b>GV-UHF Reader:</b> GV-RU9003
GV-Mobile Card	Virtual Access Card	<b>GV-QR Code Reader:</b> GV-QR1352

Model Name	Dimensions	Operating Temperature
GV-AS ID Card / GV-AS DES Card	85.5 x 54 mm (3.4" x 2.1")	-20 ~ 50°C (-4 ~ 122°F)
GV-AS ID Key Fob	30.5 x 37.5 mm (1.2" x 1.5")	-20 ~ 55°C (-4 ~ 131°F)
GV-AS DES Fob	45 x 30 mm (1.7" x 1.1")	-25 ~ 85°C (-13 ~ 185°F)
GV-Patrol Fob	34 x 6 mm (1.3" x 0.2")	-45 ~ 85°C (-49 ~ 185°F)
GV-UHF Tag	97 x 12 mm (3.8" x 0.5")	-20 ~ 85°C (-4 ~ 185°F)
GV-Tag Sticker	∅ 25 mm (∅ 0.98")	0 ~ 50°C (32 ~ 122°F)

**Note:** The hole option of the GV-AS ID Card is only available for 13.56 MHz ISO 1444-3A.