



## QUICK INSTALLATION GUIDE



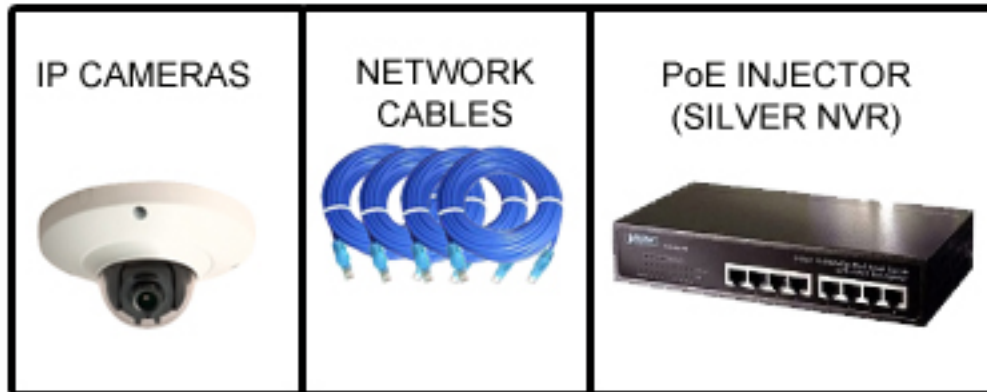
For additional support please call us.

1-888-211-2288

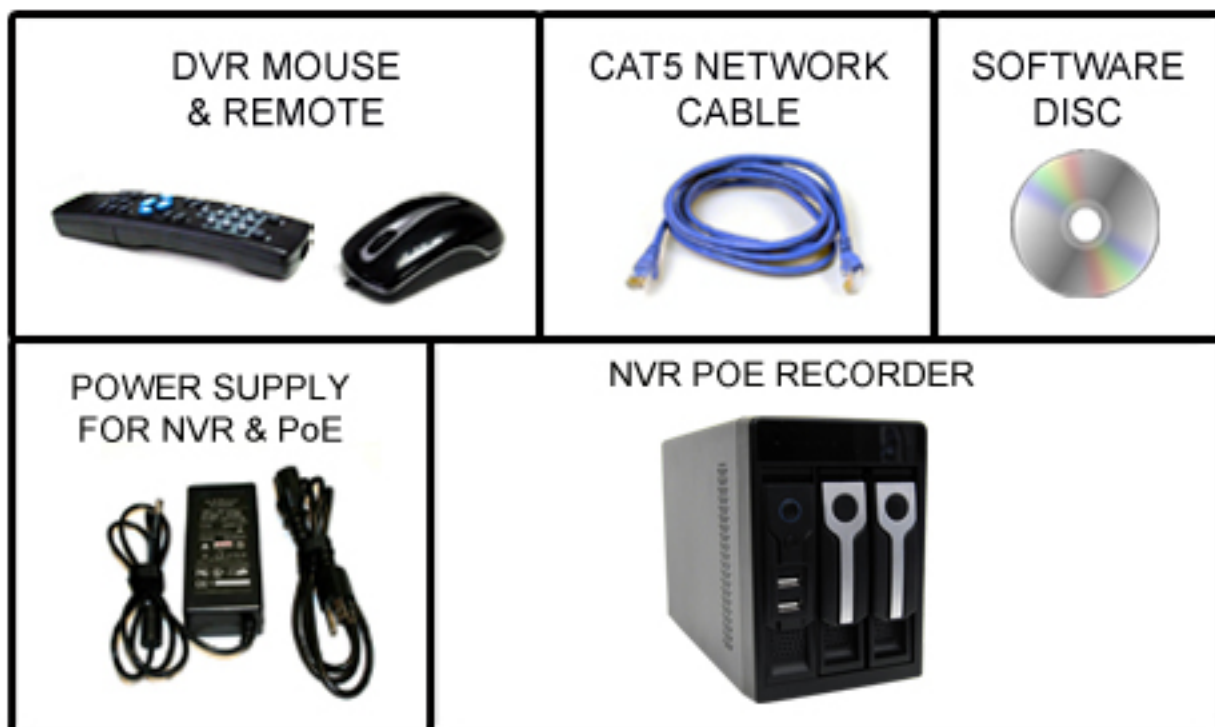
Monday through Friday

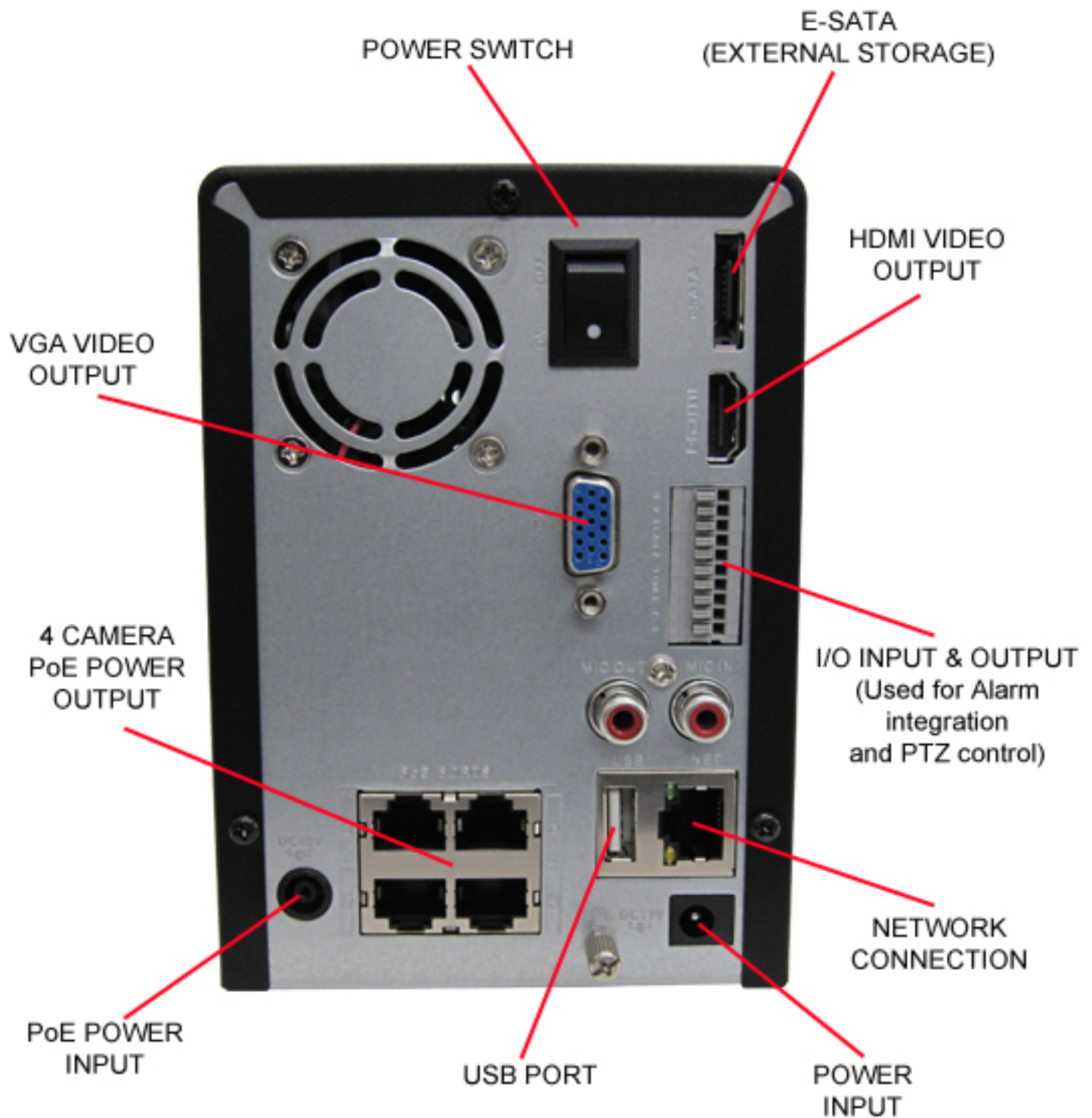
8:00AM to 5:00PM Pacific Time

ITEMS NOT INCLUDED IN DVR BOX

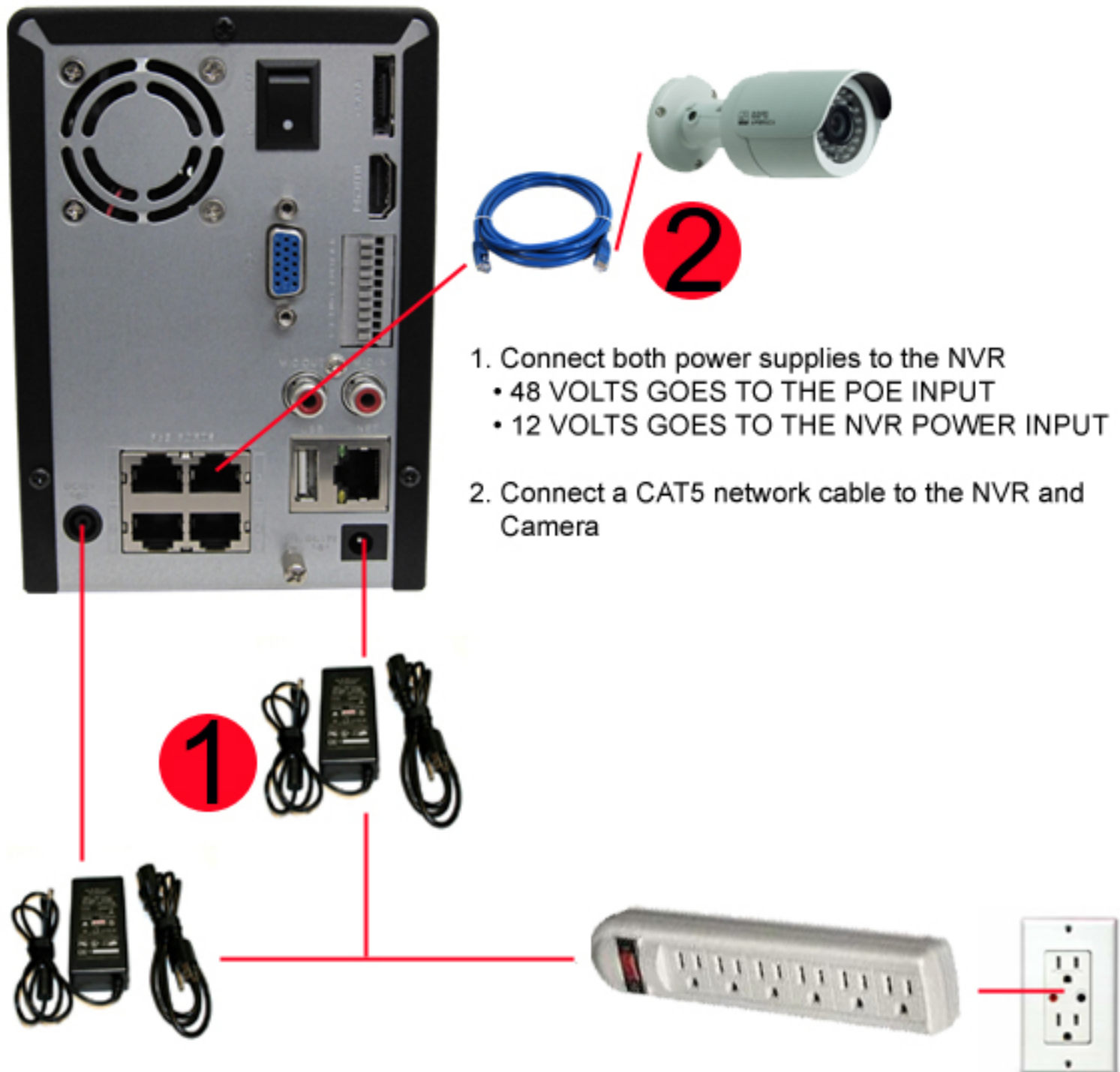


ITEMS INCLUDED IN DVR BOX

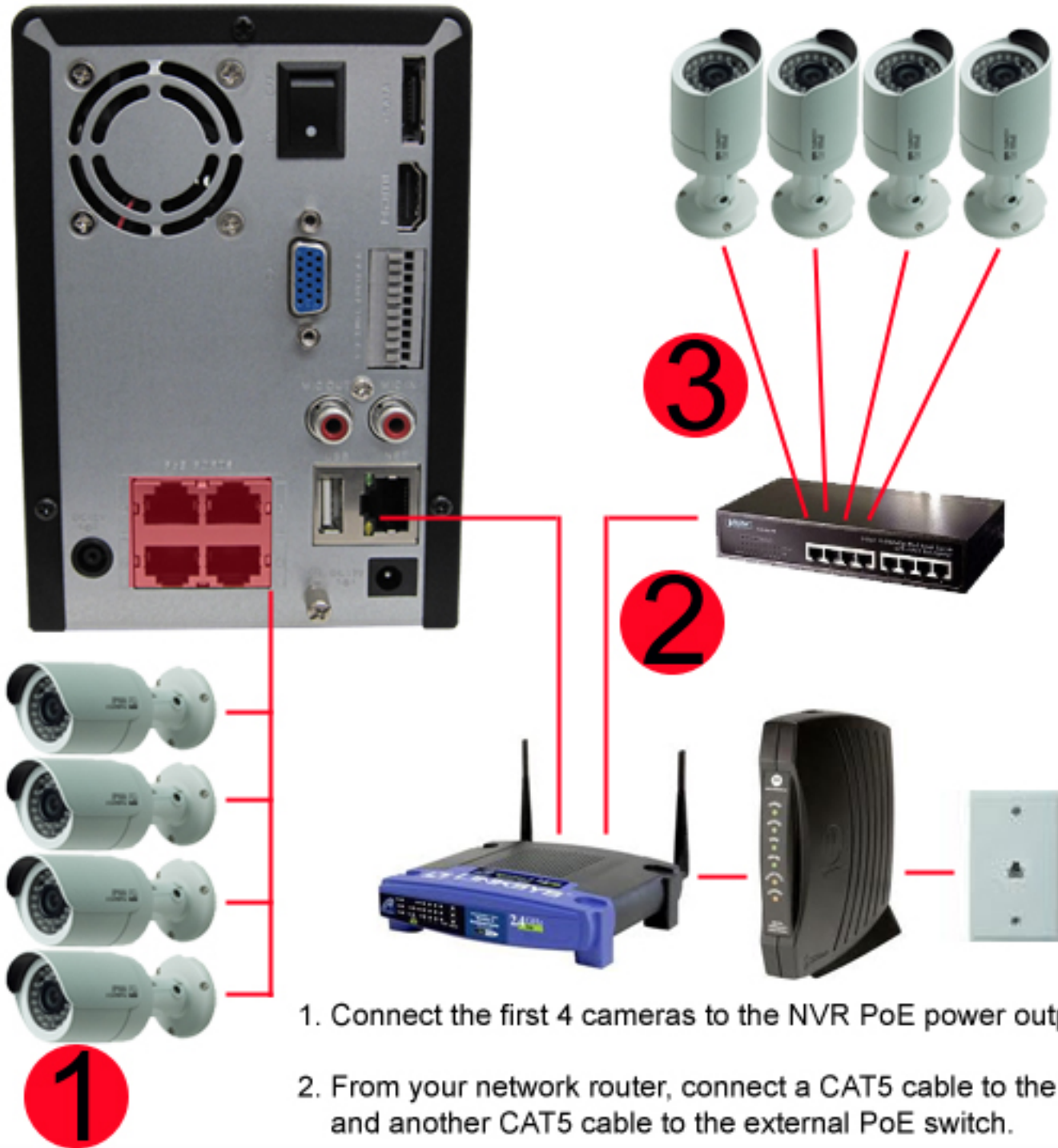




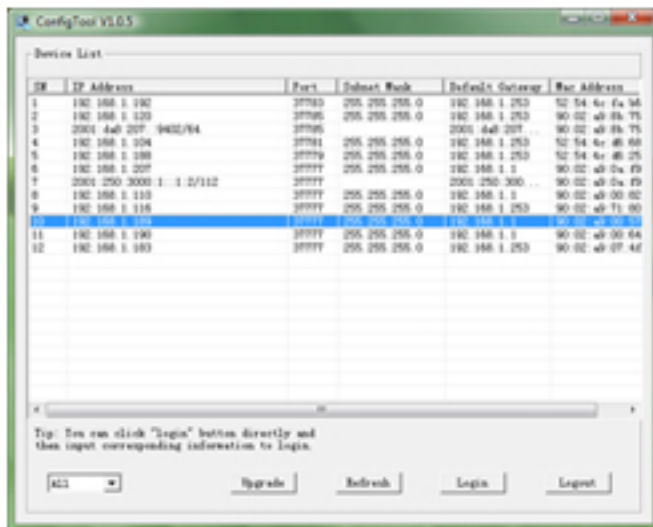
### 1 to 4 CAMERAS WITH PoE POWER



Repeat step 2 for each camera

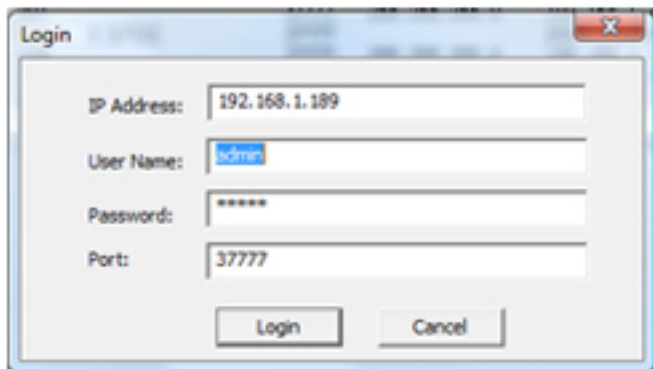


1. Connect the first 4 cameras to the NVR PoE power output.
2. From your network router, connect a CAT5 cable to the NVR and another CAT5 cable to the external PoE switch.
3. Connect the remaining IP cameras to the external PoE switch.

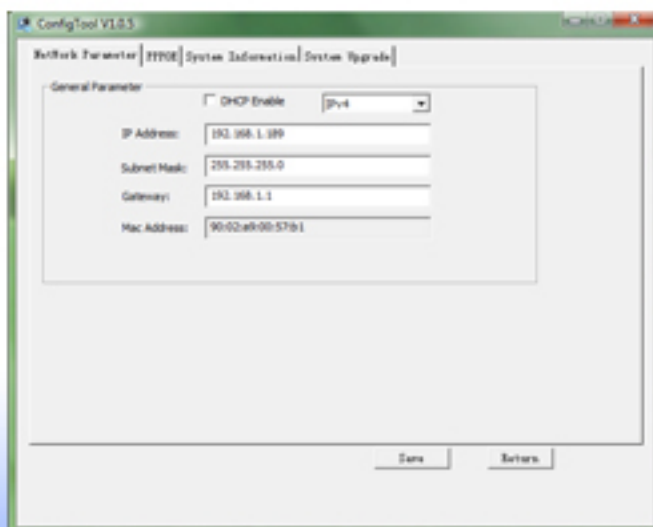


After connecting the IP cameras to the switch, find the IP Config Tool located on the CD included with the NVR system.

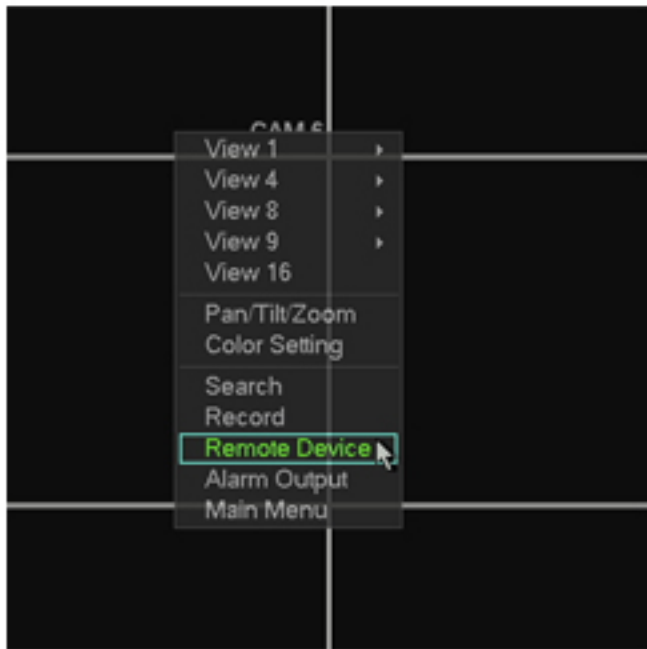
Upon launch, the Config Tool will search your network for all available IP cameras and NVRs. Our cameras will ship out with a default address of 192.168.1.108. Each camera with this address will need its IP address changed in order to operate normally on your network.



To change a camera's IP address, first double click on the IP address of the camera in the list of discovered cameras. You will then see a window like the one to the left. Click "Login" to access the menu that will allow you to change the IP address of that camera.



If you are unfamiliar with networks and IP addresses, just make sure the box next to "DHCP Enable" is selected and save the settings. If you are more familiar with networks and IP addresses, this window will allow you to assign each camera a static IP address. We recommended assigning addresses in the higher range, so no conflicts with DHCP addresses might occur. These steps will need to be taken for every camera that is not connected directly to the NVR.



Now we must access the Remote Device menu directly on the NVR to add the remaining IP cameras. To access this menu, make sure there is a monitor and mouse connected to the NVR and using the mouse, right click anywhere on the DVR screen to bring up the menu pictured on the left. From this menu, select Remote Device. You might be asked to enter in a password. The default local username and password for our NVR systems is "888888" (without the quotes).



Within the Remote Device menu, you should already see the four IP cameras that were connected previously in the bottom part of the window. To find the other cameras we have configured, you must press the button labeled, "IP Search." If the cameras were successfully configured, you will see them listed with the new IP addresses in the top part of the window. For each camera that you want to add, simply double-click on its listing in the window and it will add the camera in the next available channel. When finished adding all cameras, click on the OK button to save all changes.

IF YOU HAVE ANY ADDITIONAL QUESTIONS, PLEASE FEEL FREE TO CALL US  
M-F, 8AM-5PM PST - 1(888) 211-2288