

Chapter 4

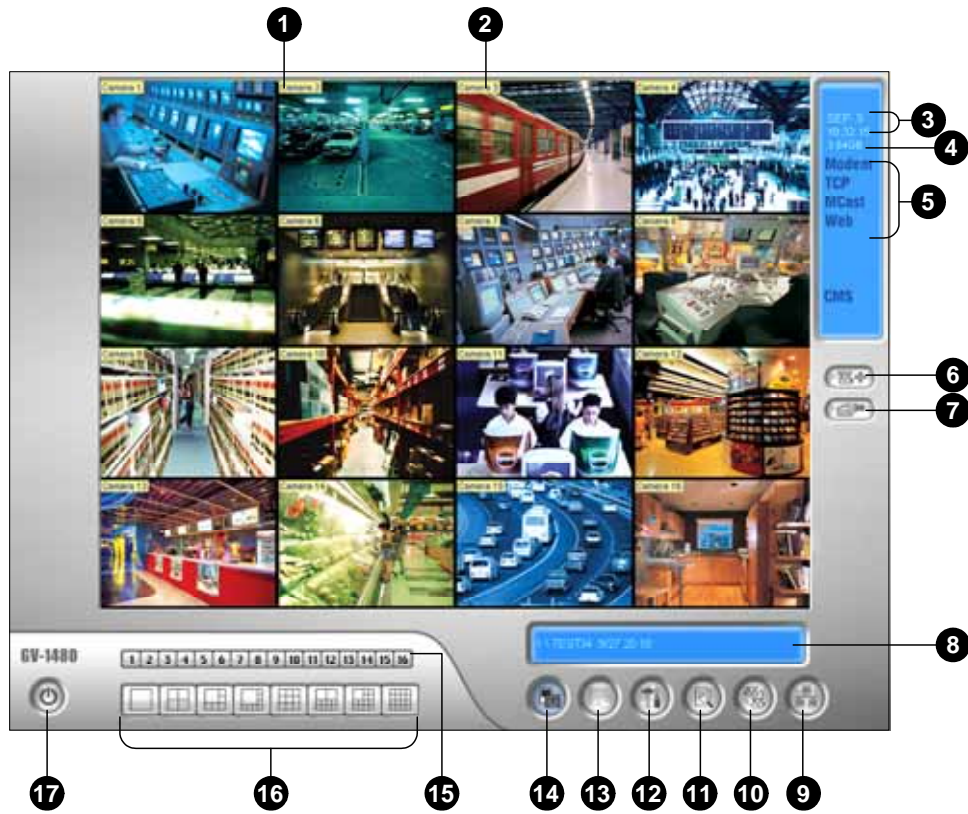
Screen Overview

The GV-System provides two skin types: Silver and Conventional. The factory default is Silver. Each skin type has its own interface design. Therefore, this chapter gives you an overview of the following major screens:

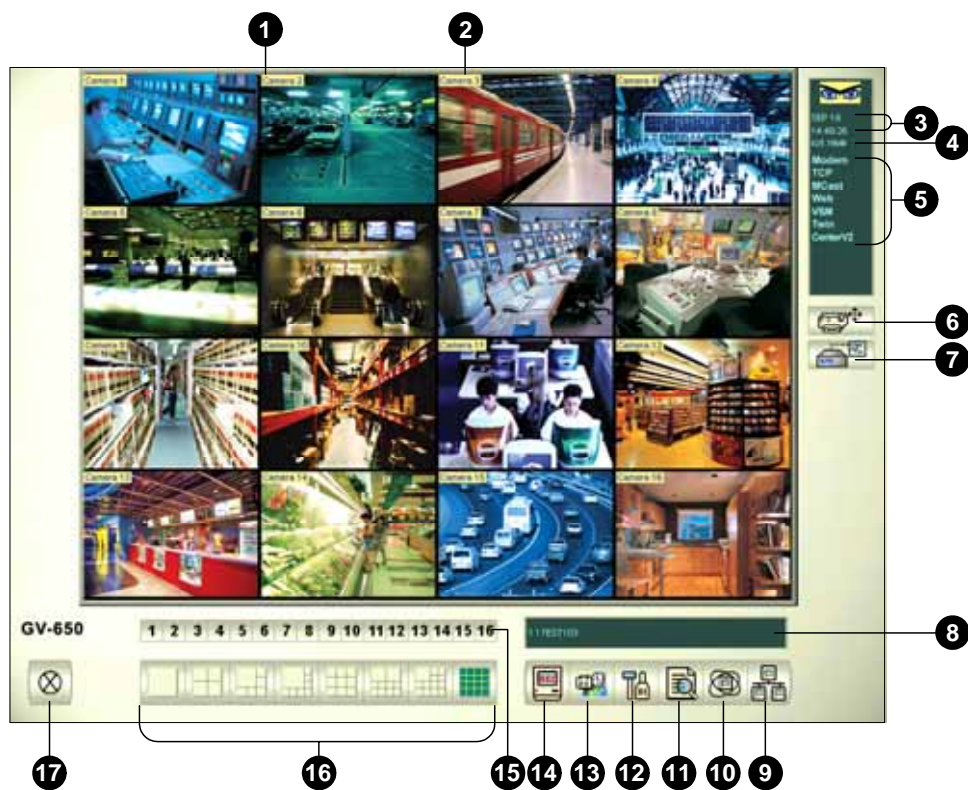
- **Main System**
- **ViewLog**
- **Remote Playback Client**
- **SingleView MPEG4 Encoder Viewer**
- **MultiView MPEG4 Encoder Viewer**
- **Center V2**
- **Control Center**

4.1 Main System

Silver



Conventional

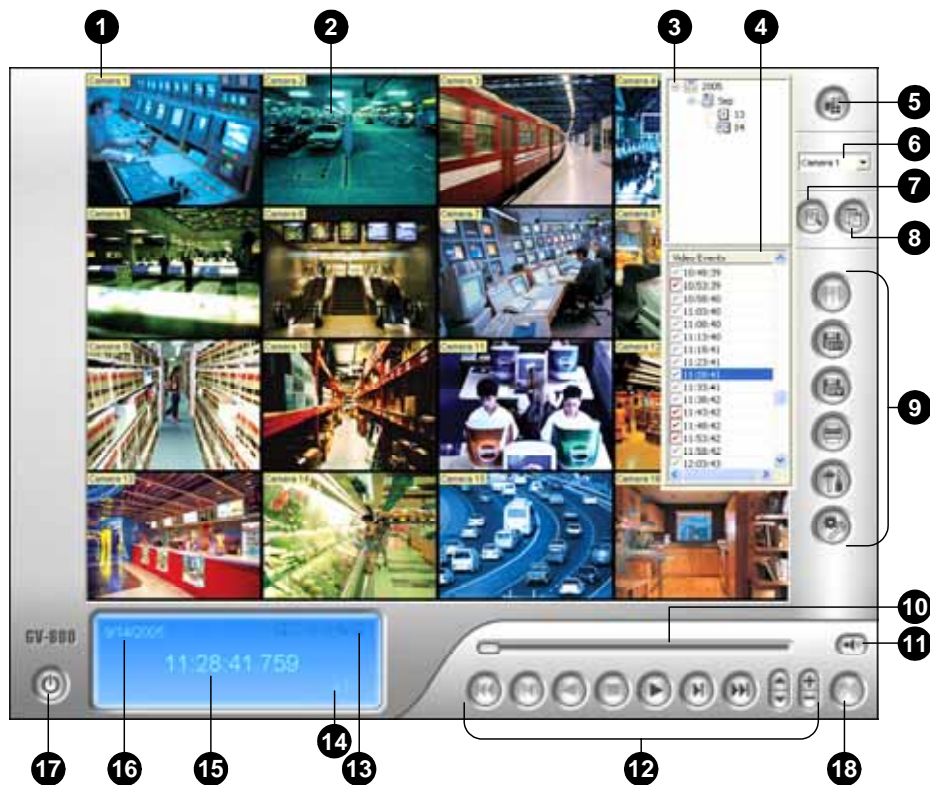


The controls in the main screen:

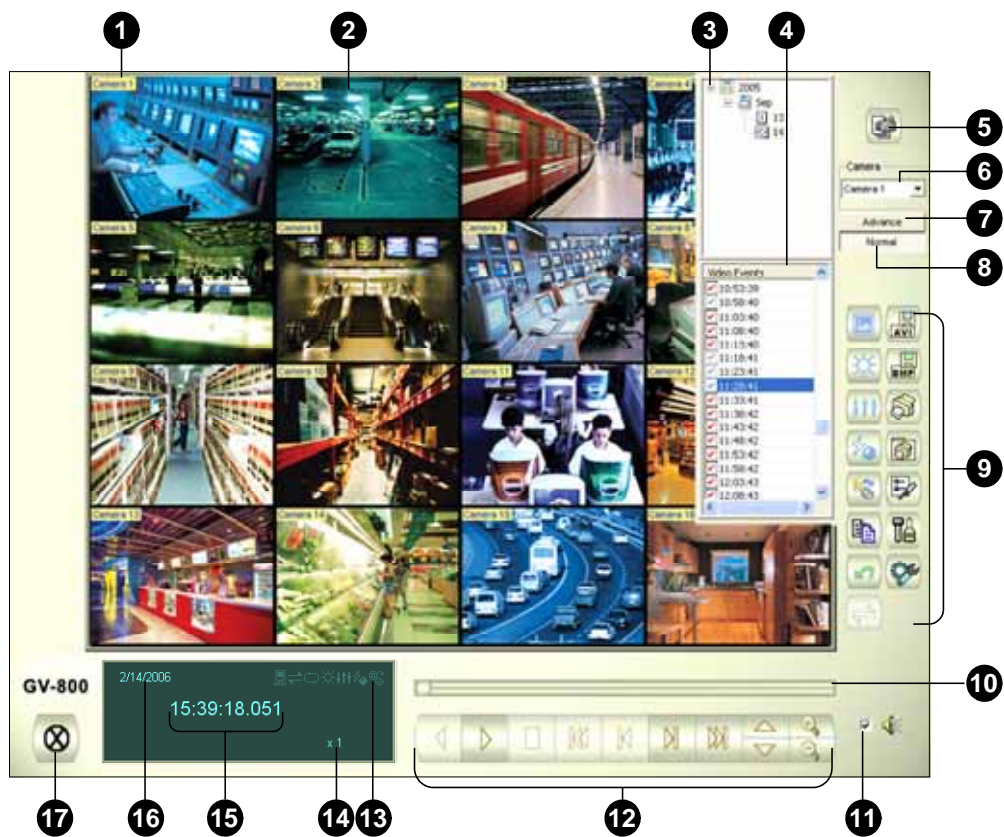
No	Name	Description
1	Camera Number	Indicates the camera number matching the port number in the GV video capture card.
2	Camera Name	Indicates the given camera name.
3	Date/Time	Indicates the current date and time.
4	Storage Space	Indicates the remaining disk space.
5	Connection	Indicates the connection status of remote applications.
6	PTZ Control	Displays the PTZ control panel.
7	I/O Control	Displays the I/O control panel.
8	Location Name	Indicates the GV-System's name, usually named by its geographical location.
9	Network	Enables the connection to remote applications
10	Camera Scan	Rotates through the screen divisions.
11	ViewLog	Brings up these options: Video/Audio Log, System Log, Search POS Data, POS Live View, Live Object Index, Search Object Index and E-Map.
12	Configure	Accesses system settings.
13	Schedule	Sets up recording schedules.
14	Monitor	Starts or stops monitoring.
15	Camera Select	Selects the desired camera number for main division view.
16	Screen Division	Selects screen divisions.
17	Exit	Brings up these options: Login/Change User, Logout, Minimize, Restart Multicam and Exit.

4.2 ViewLog

Silver



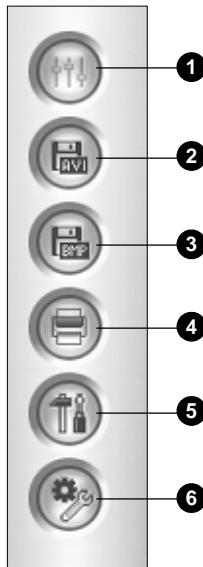
Conventional



The controls in the ViewLog window:

No	Name	Description
1	Camera Name	Indicates the given camera name.
2	Camera View	Displays the playback video.
3	Date Tree	Displays date folders.
4	Video Event List	Displays video events within a certain date folder.
5	View Mode	Sets screen divisions: Single, Thumbnail, Quad or Multi View.
6	Camera Select	Sets a desired camera for display.
7	Advance	Accesses the basic or advanced search, and reloads video event list.
8	Normal	Displays the date tree and video event list.
9	Function Panel	Provides various settings for ViewLog.
10	Scroll Bar	Scrolls forward or backward of the playback video.
11	Audio Playback	Enables audio playback.
12	Playback Panel	Contains typical playback control buttons.
13	Function Icons	A highlighted icon indicates an enabled function. From left to right are the A to B Mode, auto playing of next events, the contrast and brightness function, the light enhancement and equalization function, the sharpness and smoothness function, the grayscale function, and reconnection to Remote ViewLog.
14	Playback Speed	Indicates the playback speed. x 1 represents normal playback speed.
15	Time Display	Indicates the time of the playback video.
16	Date Display	Indicates the date of the playback video.
17	Exit	Closes or minimizes the ViewLog window.
18	A to B Mode	Plays repeatedly the set frames A to B.

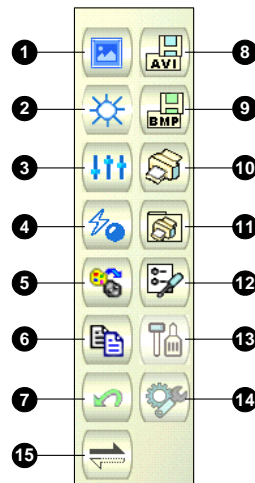
Silver Functional Panel



The controls in the Functional Panel:

No	Name	Description
1	Effects	Adds effects to the images. The effect options include: Sample, Contrast/Brightness, Light Enhancement, Equalization, Sharpen, Smooth, Grayscale, Copy, Undo to Prev. Action and Undo All Effects.
2	Save As AVI	Saves a video file as avi or exe format.
3	Save As Image	Saves a video image as bmp, jpg, gif, png, or tif format.
4	Print	Specifies various settings for printing.
5	Setting	Accesses system settings of ViewLog.
6	Tools	Brings up these options: Object Search, Advanced Log Browser, Backup, Delete, Connect to Remote ViewLog Service, Address Book, Full Screen and Fast Key.

Conventional Functional Panel

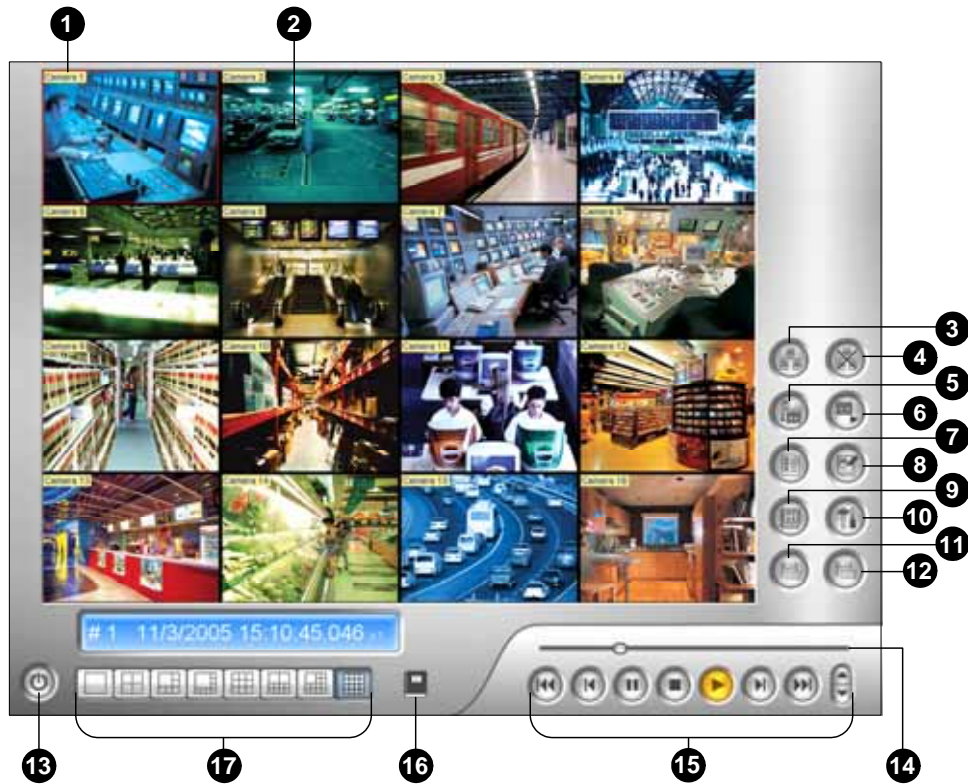


The controls in the Function Panel:

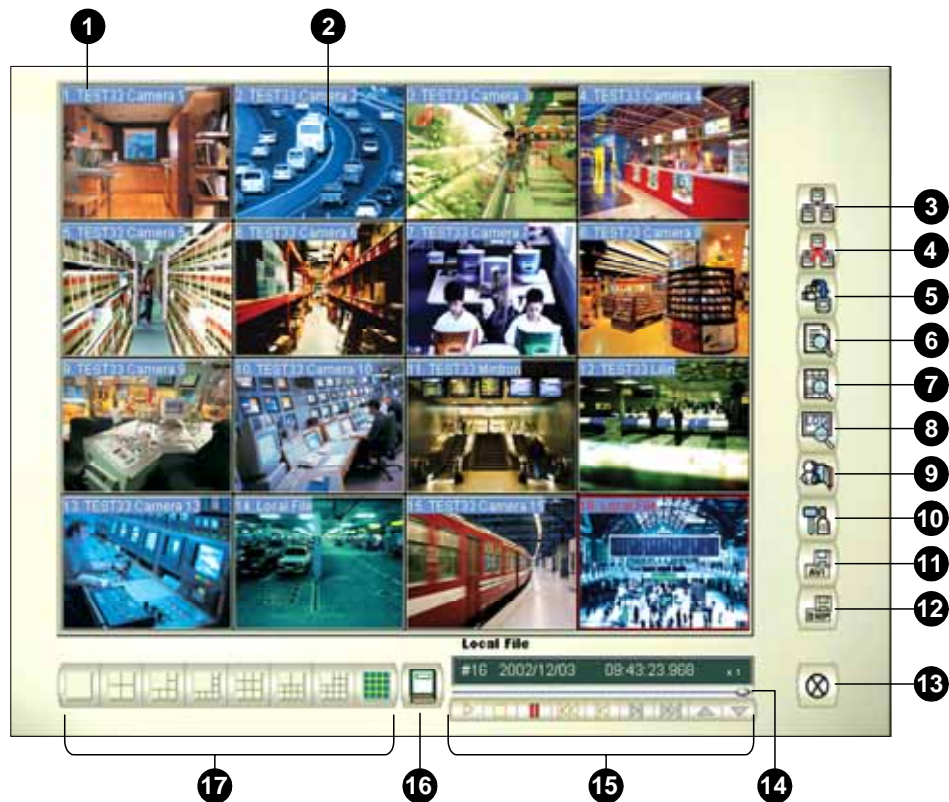
No	Name	Description
1	Sample	Gives the examples of “Before” and “After” effects of contrast, brightness, light enhancement, equalization, sharpness, smoothness and Gray.
2	Contrast/Brightness	Modifies color contrast and brightness of the video image.
3	Light Enhancement/ Equalization	Modifies light enhancement and equalization of the video image. To remove the applied effect, click the Undo button.
4	Sharpen/Smooth	Modifies smoothness and sharpness of the video image. To remove the applied effect, click the Undo button.
5	Grayscale	Switches to the black/white image. To remove the applied effect, click the Undo button.
6	Copy	Copies the video image.
7	Undo	Undoes the applied effects on the video image.
8	Save AVI File	Saves a video file as avi or exe format
9	Save As Image	Saves a video image as bmp, jpg, gif , png, or tif format.
10	Print	Prints out the image.
11	Print Setup	Specifies various settings for printing.
12	Page Setup	Adjusts the page layout.
13	Setting	Accesses system settings of ViewLog.
14	Tools	Brings up these options: Object Search, Advanced Log Browser, Backup, Delete, Connect to Remote ViewLog Service, Address Book, Full Screen and Fast Key.
15	A to B Mode	Plays repeatedly the set frames A to B.

4.3 Remote Playback Client

Silver



Conventional

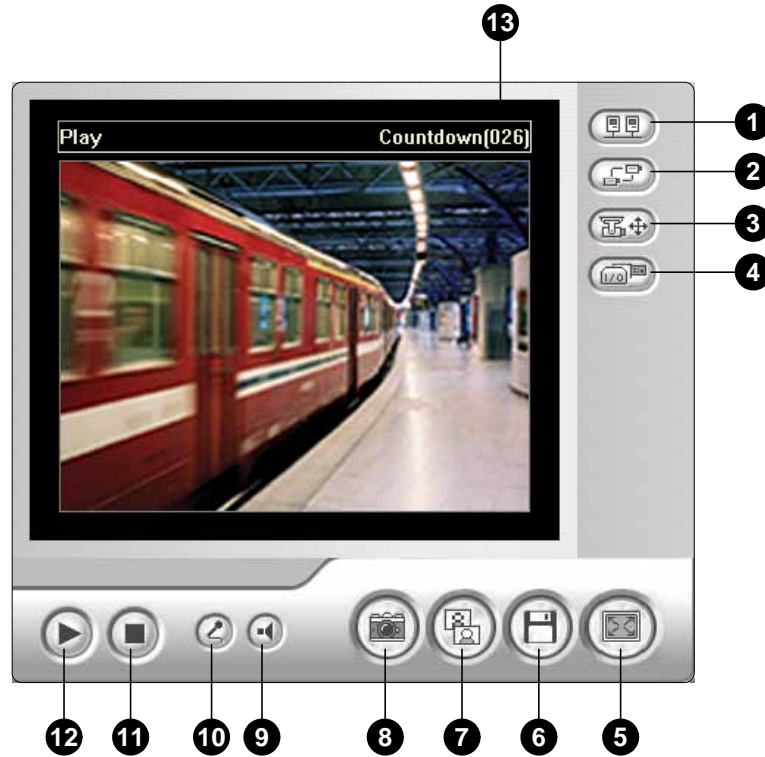


The controls in the RPB Client window:

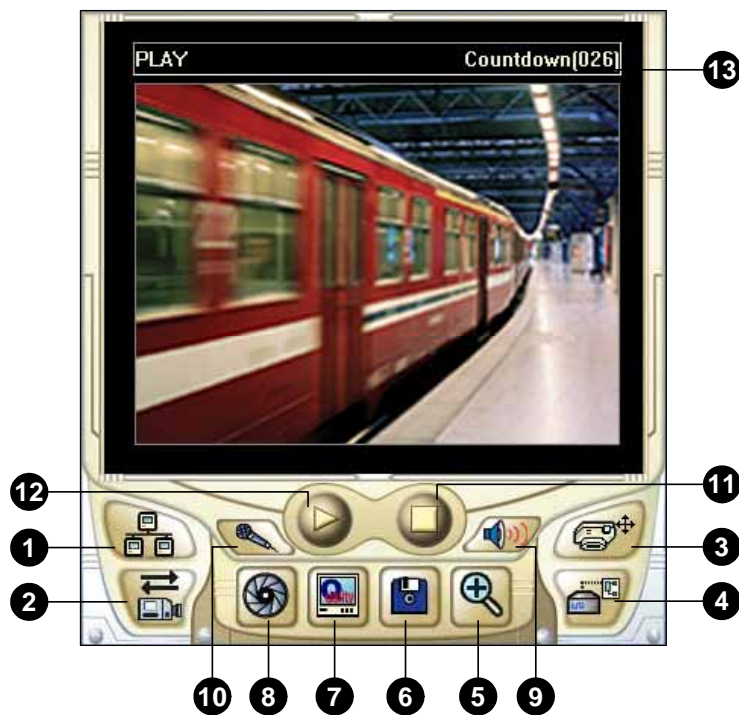
	Name	Description
1	Camera Name	Indicates the given camera name.
2	Camera View	Displays the playback video.
3	Connect	Sets the connection to the RPB servers.
4	Disconnect	Closes all or selected connections to the RPB servers.
5	Download (Play) Remote Video	Downloads and plays the remote video.
6	Play Local Video	Plays back video files at the client computer.
7	View List	Keeps track of connection activities.
8	Connection Record	Keeps record of connection status.
9	Address Book	Creates a quick connection to the RPB server.
10	Preference Setting	Sets download status, text display and panel resolution.
11	Save As AVI	Saves a video file as avi or exe format.
12	Save As BMP	Saves a video image as bmp format.
13	Exit	Closes or minimizes the RPB Client window.
14	Scroll Bar	Moves forward and backward of the playback video.
15	Playback Panel	Contains typical playback buttons.
16	Page Select	Toggles between channels 1~16 and 17~32.
17	Screen Division	Sets the screen divisions.

4.4 SingleView MPEG4 Encoder Viewer

Silver



Conventional

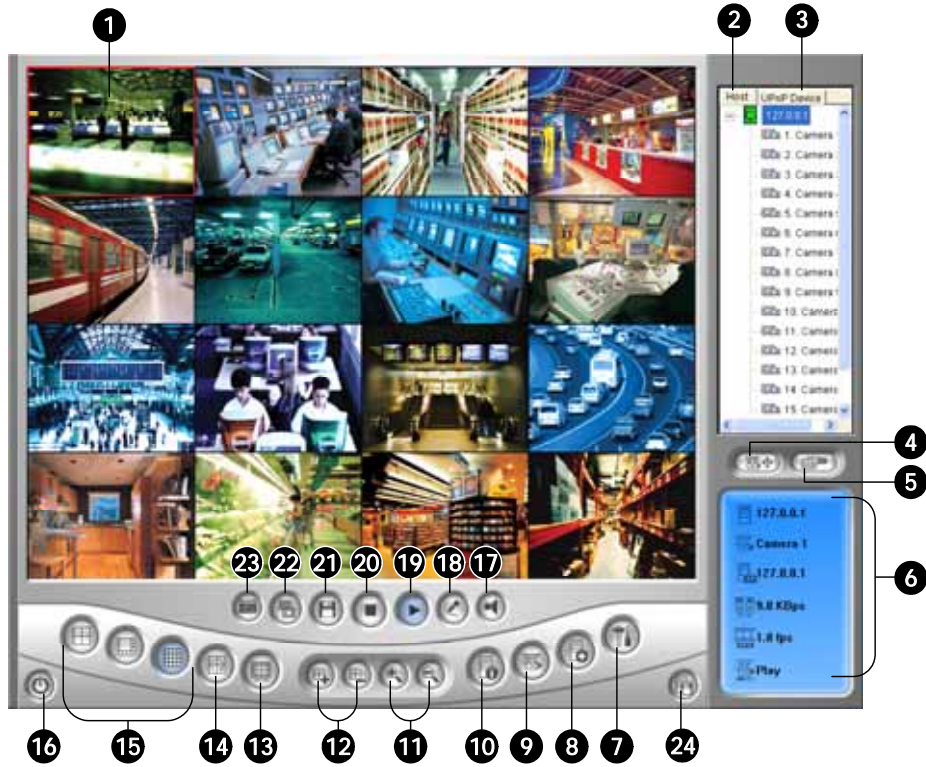


The controls in the SingleView Viewer:

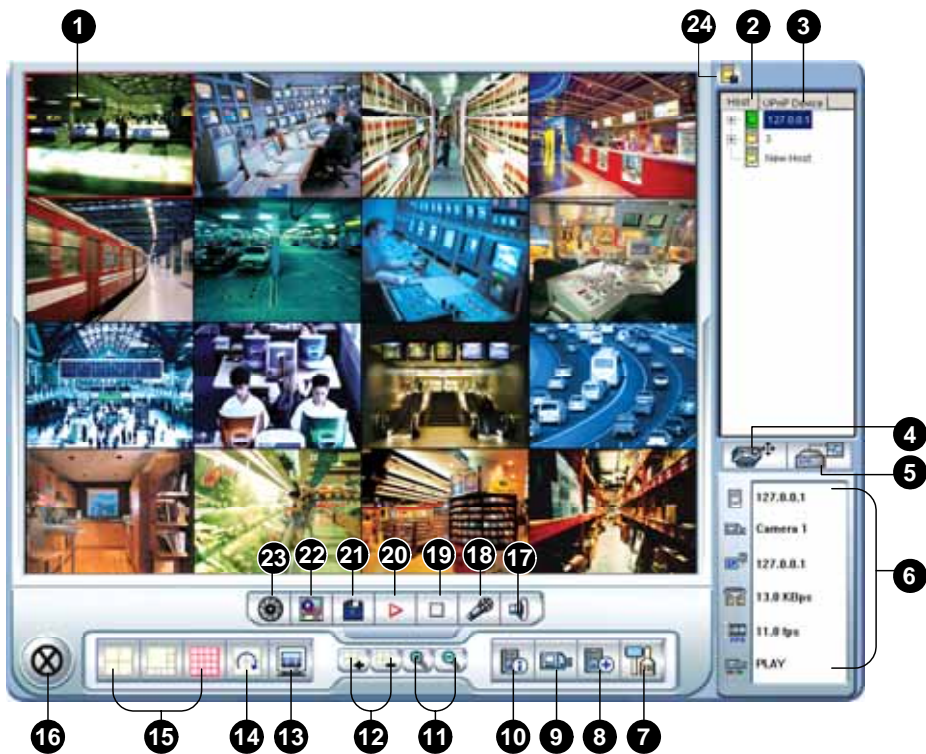
No	Name	Description
1	Change Server	Brings up these options: Alarm Notify, Data Rate Configure, Remote Config, Change Server, Show Camera Name and Enable DirectDraw.
2	Change Camera	Sets the desired camera for display.
3	PTZ Control	Displays the PTZ control panel.
4	I/O Control	Displays the I/O control panel.
5	Full Screen	Switches to full screen view.
6	File Save	Saves live video in the local computer.
7	Change Quality	Adjusts video quality in 4 levels.
8	Snapshot	Takes a snapshot of the displayed live video.
9	Speaker	Enables live audio from the remote GV-System.
10	Microphone	Enables speaking to the remote GV-System.
11	Stop	Terminates the connection to the remote GV-System.
12	Play	Connects to the remote GV-System.
13	Countdown Timer	Indicates the remaining time when you log in as Guest. When the time is up, you will be logged out automatically.

4.5 MultiView MPEG4 Encoder Viewer

Silver



Conventional



The controls in the MultiView Viewer:

No	Name	Description
1	Monitoring Window	Displays live video.
2	Host Server Window	Displays connected GV-Systems and their available cameras.
3	UPnP Device	Displays all hosts on the same LAN.
4	PTZ Control	Displays the PTZ control panel.
5	I/O Conrol	Displays the I/O control panel.
6	Channel Status	Indicates the general information of the selected channel.
7	Configure	Accesses system settings of the MultiView.
8	Edit Host	Adds, deletes or modifies GV-Systems.
9	Camera Status	Displays the camera status of the connected GV-Systems.
10	Host Information	Displays the general information of the connected GV-Systems.
11	Zoom in and out	Zooms in or out the selected channel.
12	Add/Remove Channel	Adds or deletes the channels for video polling. Click the Add or Remove Channel button and then click the desired channel to add to or remove from the video polling.
13	Full Screen	Switches to a full screen view.
14	Video Polling	Rotates through the selected channels.
15	Screen Division	Sets the screen divisions for 4, 8 or 16.
16	Exit/Minimize	Closes or minimizes the MultiView window.
17	Speaker	Enables speaking to the remote GV-System.
18	Microphone	Enables live audio from the remote GV-System.
19	Stop	Terminates the connection to a GV-System.
20	Play	Establishes the connection to a GV-System.
21	Save	Saves live video.
22	Quality	Changes video resolution.
23	Snapshot	Takes a snapshot of the selected channel.
24	Save Camera to Multiple Host	Saves the selected cameras to create a Multiple Host.

4.6 Remote Playback on WebCam

Silver



Conventional

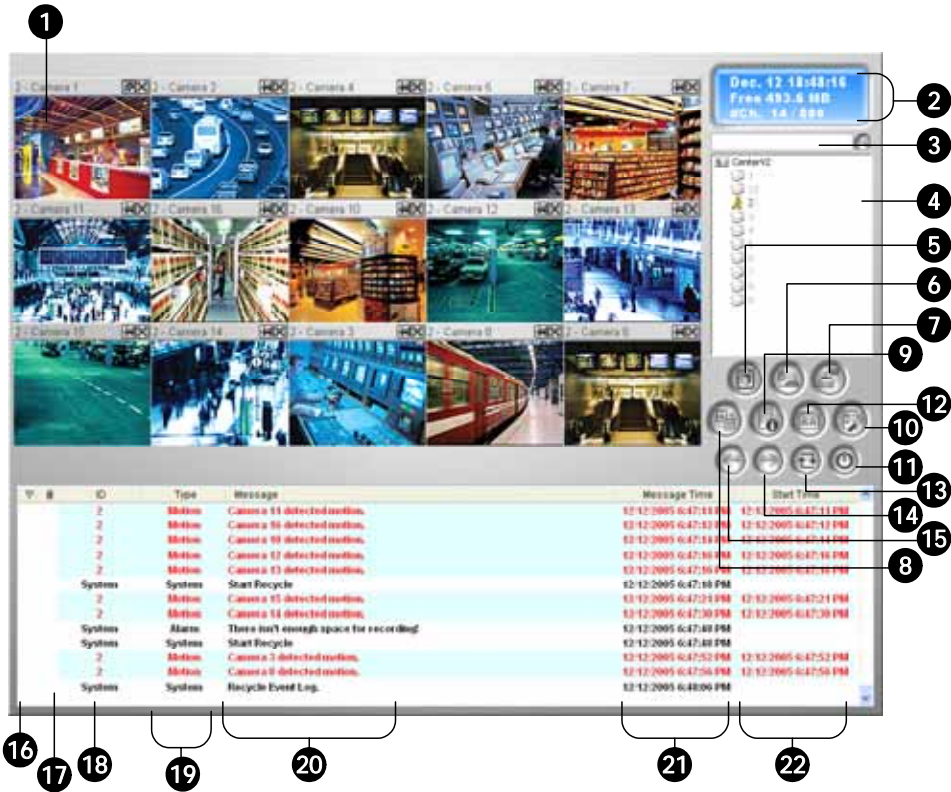


The controls in the Remote Playback on WebCam:

No	Name	Description
1	File Tree	Displays date folders.
2	Event List	Displays the video events
3	Channel Select Tab	Selects different channels.
4	Download	Downloads the video file.
5	Full Screen	Switches to a full screen view.
6	Pause	Pauses the video file.
7	Play	Plays the video file.
8	Stop	Stops the video file.
9	Get Data List	Includes the options: Enable Audio, Advance Search, Get Date List, Search Object Index, and Enable DirectDraw.
10	Snapshot	Takes a snapshot of the displayed live video.

4.7 Center V2

Silver



Conventional

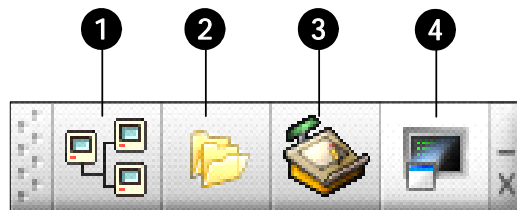


The controls in the Center V2 window:

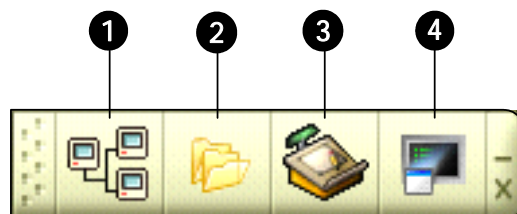
No	Name	Description
1	Monitoring Window	Displays live video.
2	Status Panel	Indicates the date, time, remaining disk space and the total number of online channels versus available channels.
3	Find A Subscriber	Type the desired ID in the Current Subscriber field and click this button to search.
4	Subscriber List	Displays subscribers' IDs and online status. Blue Icon: Indicates the subscriber is online. White Icon: Indicates the subscriber is offline. Alarm Icon: Indicates either motion has been detected or the I/O has been triggered at the subscriber's site.
5	Event List	Accesses Event Log and Event List.
6	SMS	Configures the SMS service.
7	I/O Device	Configures and forces output devices at Center V2.
8	Screen Division	In the 1024 x 768 resolution, you can select 6, 15, or 24 screen divisions for a single monitor; 9, 25, or 36 screen divisions for dual monitors. In the 1280 x 1024 resolution, you can select 6, 12, or 24 screen divisions for a single monitor; 9, 20, or 42 screen divisions for dual monitors.
9	Host Info	Displays the connection status of subscribers.
10	Preference Settings	Brings up these options: System Configure, Notification, Password Setup and E-mail Setup.
11	Exit	Closes or minimizes the Center V2 window.
12	Accounts	Adds, deletes or modifies subscriber accounts.
13	Refresh Channel	Refreshes the connection status.
14	Next Page	Displays the next page of camera views.
15	Previous Page	Displays the previous page of camera views.
16	Flag	Flags an event for later reference.
17	Clip	Indicates an event coming with an attachment. Double-click the event to open the attached video file.
18	ID	Indicates a subscriber's ID.
19	Event Type	Indicates the event type: Alarm, Attachment, Connection, Login/Logout, Motion, System and Trigger.
20	Message	Indicates associated information for each event type.
21	Message Time	Indicates when Center V2 receives an event.
22	Start Time	Indicates when an event happens at the subscriber's site.

4.8 Control Center Toolbar

Silver



Conventional



The controls on the Control Center Toolbar:

No	Name	Description
1	Host List	Opens the Host List to create and edit DVRs.
2	Group List	Opens the Group List to group cameras from different DVRs.
3	Edit	Opens the Edit toolbar to display these buttons: Search DVR, Configure, Save, and Delete. The Add Host button only appears after the Host List is opened.
4	Service	Opens the Service toolbar to display these buttons: Remote Control, Remote ViewLog and I/O Central Panel.