

PLAYBACK RECORDED VIDEO

Step 1

Start out by right clicking with the mouse and choose "Search".

Step 2

To start a search, first enter the time and date towards the bottom left. To the right of the time and date you should see up to 4 numbers listed which are your channels. Select the channels you want to search. When completed, click the search button located on the bottom right (magnifying glass).



Step 4

Double left click on the result you want to playback on the right hand side. The video will be shown in the main window.

Step 5

Click in the individual channel windows to control the playback – fast forward, backward, pause, etc...

Step 6

Use the Next/Previous channel and Next/Previous video clip buttons to easily jump through to your other channels/results.

Note: You may want to move the cursor to each button on the window to get familiar with its function which is displayed in the message bar.

BACKUP RECORDED VIDEO

Step 1

Insert your USB drive or blank CD/DVD disk.

Step 2

Login to the DVR as administrator using **888888/888888** for username and password. Press "Enter" Key for the password prompt.

Step 3

Select "ARCHIVE" then "BACKUP FILES"

Step 5

Verify the system has detected the media correctly. Look at the top for "Left Space/Total Space." This shows how much free space you have remaining on your USB or CDR.

Step 6

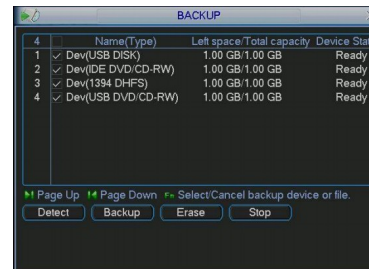
Select the "Type", "Channel", and fill in the "Start Time" and "End Time". Select "Add". Video clips meet the criteria will be displayed. You can check/uncheck to include/exclude the file for the backup.

Step 7

Repeat Step 6 to add video clips from other channels. Watch for that "Space Required" not to exceed "Space Remained".

Step 8

Select "Backup" to start the backup process.



Gold DVR Quick Setup



Worldyecam, INC.

24551 Raymond Way, Suite 270

Lake Forest, CA 92630

Phone: 1-888-211-CCTV (2288)

FAX: 949-305-9977

Email: support@worldyecam.com

http://www.worldyecam.com

Quick Start

DVR SETUP



- STEP 1: Connect power.**
- STEP 2: Connect video.**
- STEP 3: Connect monitor.**
- STEP 4: Connect network.**
- STEP 5: Power on DVR.**

CAMERA CONNECTIONS



DVR NETWORK CONFIG

Step 1

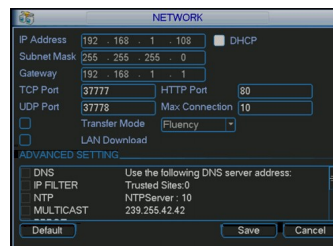
Login to the DVR as administrator. Press **"Enter"** Key for the password prompt. The default username/ password is **"888888/888888"**

Step 2

Select **"SETTING"** from the main menu. Then select **"NETWORK"**

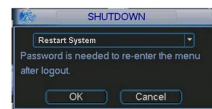
Step 3

Click **"DHCP"** (make sure the box is white, if black then click it). Select **"Save"** at bottom on the menu.



Step 4

Next, you will need to restart the DVR. To do this, first go back to the main menu and click on **"SHUTDOWN"**. Next, select **"Restart system"** from the drop down menu options and click **"OK"**.



Step 11

Next, go back to the **"NETWORK"** settings and **un-check** the **DHCP** box. Click **"SAVE"**

DVR RECORDING CONFIG

Step 1

Login to the DVR as administrator. Press **"Enter"** Key for the password prompt. The default username/ password is **"888888/888888"**

Step 2

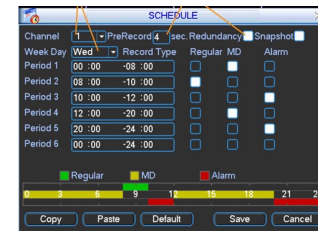
Select **"SETTING"** from the main menu. Then select **"SCHEDULE"**

Step 3

Start off by picking the channel (to apply to every channel select **"All"**) at the top left of the screen and also the day of the week (to apply to everyday select **"All"**).

Step 4

You also have options to use prerecording and redundancy.



Step 5

The periods below (1 through 6) are meant for you to break down a total day in to different time periods.

Step 6

The graph below the periods will indicate a whole days recordings in color coded form.