

AMX-5I242R-IRS/28

4MP WDR IR Dome AI Network Camera



WEC IMAXCAMPRO Series AI products adopt the most advanced AI technologies, including deep learning algorithms that primarily target people and vehicles, which provides higher flexibility and accuracy for end-user. This enables the ENS Diamond Series AI series to offer various advanced applications such as Face Recognition, ANPR, Metadata, People Counting, traffic data statistics, etc. The complete lineup of AI includes network (PTZ) cameras, network video recorders, servers, and platform management products. Beyond seeing the world, the power of AI allows devices to perceive the environment and understand the world in a better way.



MODEL(S) AVAILABLE

KEY FEATURES

- ▶ 4MP, 1/1.8" progressive-scan CMOS Sensor
- ▶ Triple-stream encoding
- ▶ Smart H.265+ and Smart H.264+ Dual Codec
- ▶ 4MP (2688 x 1520) @ 25/30 fps,
- ▶ 3.6 mm fixed lens
- ▶ 120 dB true WDR
- ▶ IP67 Ingress Protection & IK10 Vandal Resistance
- ▶ Intelligent Video System

Product Specifications

Camera	
Image Sensor	1/1.8" 4MP Progressive Scan CMOS
Image Resolution	2688 (H) × 1520 (V)
ROM	128 MB
RAM	512 MB
Electronic Shutter	Auto/Manual 1/3 s ~ 1/100,000 s
Minimum Illumination	0.001 Lux @ F1.6
S/N Ratio	> 56 dB
IR LEDs	1
IR Distance	164 ft (50 m)
Illuminator On/Off Control	Auto / Manual
Lens Type	Fixed
Focal Length	2.8 mm
Angle of View	Horizontal: 113°
	Vertical: 60°
	Diagonal: N/A
Max. Aperture	F1.6
Close Focus Distance	4.27 ft (1.3 m)
Pan / Tilt / Rotation	Pan: 0°~355° / Tilt: 0°~75° / Rotation: 0°~355°

Intelligent	
Face Capture	Support face image capture
Perimeter Protection	Tripwire, Intrusion (Human & Vehicle classification)
People Counting	Support Line crossing/Region/Queueing people counting; Support 4 accesses independent detection, 4 areas independent detection
Event Trigger	Motion detection, Video tampering, Scene changing, Network disconnection, IP address conflict, Illegal Access, Storage anomaly
General Intelligence	Object Abandoned/Missing

Video Standard	
Video Compression	H.265/H.264/H.264H/H.264B/MJPEG (Sub stream only)
Smart Codec	Smart H.265+ / Smart H.264+
Video Frame Rate	Main stream: 2688 × 1520 @ 25/30 fps
	Sub stream 1: D1 @ 25/30 fps; D1 @ 50/60 fps
	Sub stream 2: 1080P @ 16 fps
Streaming Capability	3 Streams
Video Resolution	4MP (2688 × 1520), 3MP (2304 × 1296), 1080P (1920 × 1080), 1.3MP (1280 × 960), 720P (1280 × 720), D1 (704 × 480), VGA (640 × 480), CIF (352 × 240)
Bit Rate Control	CBR; VBR
Video Bitrate	H264: 32 Kbps ~ 8192 Kbps H265: 19 Kbps ~ 8192 Kbps
Day / Night	Color; B/W
BLC Mode	Yes
HLC Mode	Yes
Wide Dynamic Range	120 dB true WDR
White Balance	Auto / Natural / Street Lamp / Outdoor / Manual / Regional Custom
Gain Control	Auto / Manual / Gain Priority / Shutter Priority

Digital Noise Reduction	3D DNR
Motion Detection	On / Off (4 areas, rectangular)
Region of Interest	4
Electronic Image Stabilization	N/A
Smart Illumination	Yes
Defog	Yes
Exposure Mode	N/A
Mirror	Yes
Privacy Masking	Yes
Image Rotation	0°/ 90°/ 180°/ 270°
Motion Detection	Yes

Network & Interface	
Ethernet	RJ-45 (10/100 Base-T)
SDK and API	N/A
Network Protocol	HTTP, HTTPS, TCP, ARP, RTSP, RTP, UDP, SMTP, FTP, DHCP, DNS, DDNS, PPPoE, IPv4/v6, QoS, UPnP, NTP, ICMP, IGMP, 802.1x
Network Interoperability	ONVIF(Profile S/Profile G); CGI; P2P; Milestone; Genetec
Scene Self-Adaptation	N/A
Streaming Method	Unicast / Multicast
Network Max. Users	20
Storage	NAS; FTP; Micro SD Card Slot (support max. 256 GB)
Web Viewer	IE / Chrome / Firefox / Safari
Management Software	Smart PSS/ DSS / P2P
Mobile	iOS / Android
BNC	N/A
Audio I/O	1/1
Alarm I/O	1/1
Audio Compression	G.711a, G.711Mu, AAC, G.726, G.723
RS485	N/A
Built-in MIC	N/A

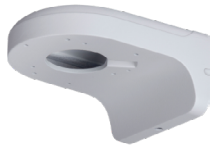
General	
Power Supply	12 V DC / PoE (IEEE 802.3af, class 0)
Power Consumption	< 5.8 W
Operating Temperature	-30°C ~ 60°C (-22°F ~ 140°F) / ≤ 95% RH
Storage Temperature	-30°C ~ 60°C (-22°F ~ 104°F) / ≤ 95% RH
Protection	IP67, IK10
Casing	Metal
Dimensions	88.9 mm × ø 122.0 mm (3.5" × ø 4.8")
Net Weight	450 g (1.04 lb)
Gross Weight	610 g (1.39lb)
Certifications	CE-LVD: EN60950-1 CE-EMC: Electromagnetic Compatibility Directive 2014/30/EU FCC: 47 CFR FCC Part 15, Subpart B UL/CUL: UL60950-1 CAN/CSA C22.2 No.60950-1-07

Product Specifications

Product Accessories



PFA137



PFB203W



PFA152-E



PFA106



PFB220-C

Product Dimensions (mm [inch])

