

Megapixel Network Camera

ACE-HDi47 Installation Guide



Table of Contents

1. INTRODUCTION
2. PACKAGE CONTENTS
3. PRODUCT DESCRIPTION
4. HARDWARE INSTALLATION
5. IP ADDRESS ASSIGNMENT
6. PRODUCT SPECIFICATIONS

1. Introduction

IP Dome Camera Installation Guide

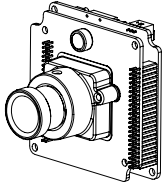
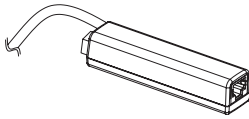
This installation guide provides instructions for installing the Network Camera on your network. For all other aspects of using the product, please see the User's Manual, available on the CD included in this package.

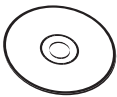

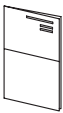
Installation Steps

1. Check the package contents against the list below.
2. Read the Product description.
3. Install the hardware.
4. Set an IP address.
5. Set the admin and user ID and password. (see User's Manual)

Important! : This product must be used in compliance with local laws and regulations.

2. Package Contents

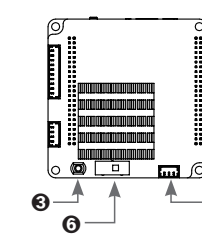
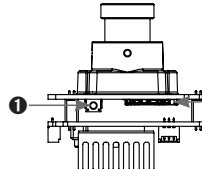
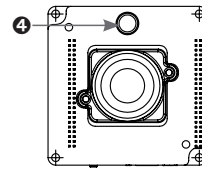
 <p>Network Module Camera</p>	 <p>PoE B'D Cable</p>
---	---

 <p>Software CD</p>	 <p>Video Output Test Cable</p>	 <p>Installation Guide</p>
--	--	---

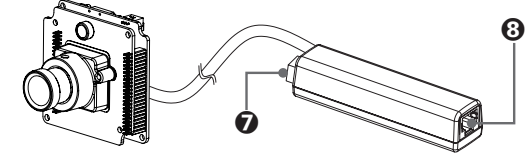
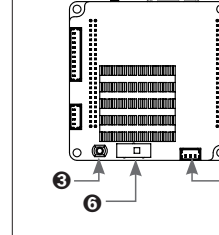
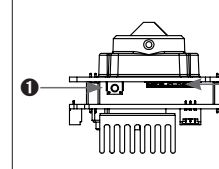
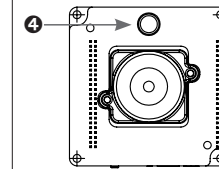
3. Product Description

Description and Function

Board Lens Type



Pinhole Lens Type

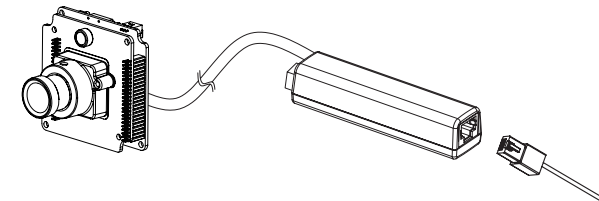


1. **Reset Button** – Press the reset switch for more than 10 seconds, then restore the camera to the function default settings.
2. **Service Video Connector** – Outputs video to the monitor.
3. **Status LED**
4. **MIC**
5. **Micro SD Card Socket.**
6. **NTSC / PAL slide Switch.**
7. **Power Input(DC12V)** – Connects to DC 12V power.
8. **Network Connector** – The Network Camera connects to the network via a standard network cable, and automatically detects the speed of the local network segment (10BaseT/100BaseTX Ethernet). PoE Supported

4. Hardware Installation

IP camera are designed to be installed using a template as shown below.

Connection



1. Connect the camera to the network using a UTP cable (CAT.5), Power can be supplied via the network cable (PoE)
2. Connect DC 12V to the power terminal. This is not necessary if the Network Camera is connected to a PoE hub or midspan.
3. Check that the indicator LEDs indicates the correct conditions.
4. Connect the analog monitor to the service video connector for adjusting focus, then press and quickly release the reset switch for focus assistant mode. Then you can select normal view or focus view mode using the reset switch.

Caution: When you use focus assistant mode, "Focus View" mode is recommended for more exact focus.
Caution: Focus assistant mode will be automatically exited after 3 minutes for normal operation.

5. IP Address Assignment

To make it accessible on the network, the Network Camera must be assigned an IP address.

Note:

- A network DHCP server is optional.
- The Network Camera has the default IP address 192.168.0.123.
- If IP assignment fails, check that there is no firewall blocking its operation and check that the Network Camera and your computer's IP are located on the same subnet.

Assign an IP address using IP Installer

The IP installer automatically searches for and displays network devices on your network. The application can also be used to manually assign a static IP address.

Note:

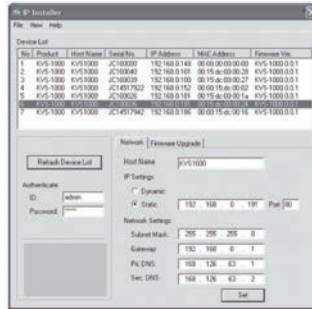
The computer running the IP installer must be on the same network segment (physical subnet) as the Network Camera.

1. Check that the Network Camera is connected to the network and that power has been supplied.



NetCamIPInstaller.exe
NetCamIPInstaller MFC Applic...

2. Start NetCAM installer.
3. When the Network Camera is displayed as shown above, select the unit that needs to be assigned an IP.
 - A. Refresh Device List – Rescan local network to find the Network Camera.
 - B. Authenticate – Enter the administrator ID and password.
 - * **Default User ID and Password is [ID: admin, Password: admin]**
 - C. Host Name – Enter the Host Name of the Network Camera.
 - D. IP Settings
 - i. Dynamic – Assign a dynamic IP address automatically from the DHCP server on your network.
 - ii. Static – Assign a static IP address manually.
 - iii. Port – Enter the HTTP port the Network Camera will use. The default setting is 80. Alternatively, any port in the range 1024-65535 may be used, but check first with your system administrator before changing the default setting.
 - E. Network Settings
 - i. Subnet Mask – Specify the mask for the subnet the Network Camera is located on.
 - ii. Gateway – Specify the IP address of the default router (gateway) used for connecting devices attached to different networks and network segments.
 - iii. Pri. DNS – Enter the IP address of the primary DNS server. This server provides the translation of host names to IP addresses on your network.
 - iv. Sec. DNS – Specify the IP address of the secondary DNS server. This will be used if the primary DNS server is unavailable.
4. Click the "Set" button to save the configuration.

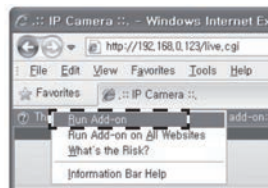


Accessing the Network Camera

1. Start your browser(when you first run ActiveX to install, run an "IE as Administrator" on Windows or Vista).
2. Enter the IP address or host name of the Network Camera in the Address field of your browser.
3. If you are accessing the Network Camera for the first time, you will see the following warning message as shown below.



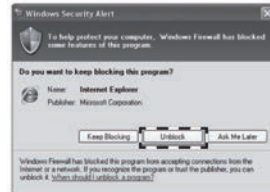
4. Click the warning message and select "Install ActiveX Control..."



5. Click "Install" to install the Web Viewer.

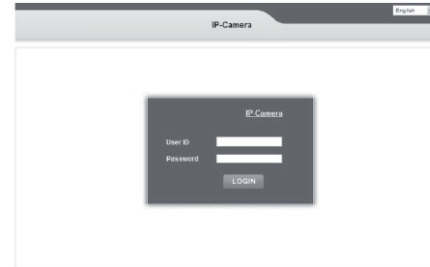


6. If a Windows Security Alert pop-up appears, click "Unblock"



7. After installing the Web View ActiveX Control, a Login page will be displayed. Enter the user ID and password.

Note: Default User ID and Password is [ID: admin, Password: admin]



8. The video image displays in your browser.



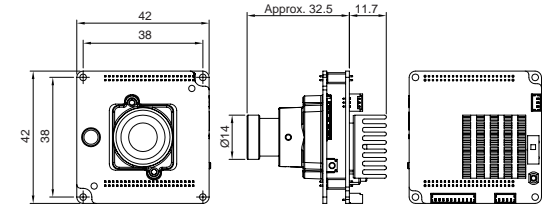
Note: To view streaming video in Microsoft Internet Explorer, you must set your browser to allow the "Web Viewer" to be installed on your computer. This ActiveX component is installed the first time a video stream is accessed.

6. Product Specifications

ITEM	DESCRIPTION	
Image Device	2.1 Mega Pixel 1/3" SONY Progressive CMOS	
Lens(Unit: mm)	Board Lens, Pinhole Lens	
Minimum Illumination	0.1 lux	
Video	Video Codec	H.264 Main Profile Motion JPEG
	Resolutions (H.264/MJPEG)	H.264: MAX 1920x1080 + Analog Output @ 30fps, MJPEG: MAX 1280x720 @ 30fps
	Video Streaming	Multi Streaming VBR / CRB (Controllable Frame Rate and Bandwidth)
Audio / Micro SD	Image Settings	Brightness, Contrast, Saturation, Sharpness, White Balance, Motion Detection, Mirror Exposure Control, Compensation, Privacy mask, BLC, 3D DNR, D-WDR
	Audio Code	G. 711, G. 726
	Audio Input	Built in microphone
Network	Micro SD / SDHC	Micro Card (Max 32GB)
	Security	Multiple user access levels with password protection, HTTPS (SSL)
General	Supported Protocols	IPV4, HTTP, HTTPS, TCP, RTSP, RTP, UDP, IGMP, RTCP, SMTP, FTP, ICMP, DHCP, ARP, DNS, DDNS, HTTPS, UPnP
	Power	DC12V(+10%), Max. 240mA/ Power over Ethernet Class 3 (IEEE 802.3af)
General	Interfaces	RJ-45 for Ethernet 10baseT/100baseTX with PoE 3.5mm Power Input: DC 12V, connector for Service Video SD Card Socket, NTSC / PAL Toggle Switch
	Operating Conditions	Temperature: - 10°C ~ +50°C(14°F~122°F), Humidity MAX. 80% RH(non-condensing)
	Storage Conditions	Temperature: - 20°C ~ +60°C(-4°F~140°F), Humidity MAX. 90% RH(non-condensing)
	Conformity	CE, FCC

Dimensions(Unit:mm)

Board Lens type



Pinhole Lens type

